

POPULATION

Population Trends

Table 1 provides information on population in Illinois, Champaign County, and townships within Champaign County from 1970 to 2010. The highest percentages of growth from 1970 to 2010 occurred in Mahomet and St. Joseph townships. The highest percentages of decline for the same period occurred

in Rantoul and Raymond townships. Population counts for political boundaries are created by adding together counts from all census block statistical areas within the boundary.

Table 2 presents population trends for the municipalities within Champaign County from 1970-2010. The greatest percentages of growth from 1970-2010 occurred in Savoy and

Table 1: Population Trends in Champaign County Townships: 1970, 1980, 1990, 2000, and 2010

Area	1970	1980	1990	2000	2010	Avg. Annual % Change 1970-2010	Avg. Annual % Change 2000-2010
Illinois	11,110,285	11,427,429	11,430,602	12,419,593	12,830,632	0.39%	0.33%
County	163,281	168,392	173,025	179,669	201,081	0.58%	1.19%
Ayers	504	503	481	441	453	-0.25%	0.27%
Brown	1,837	1,616	1,488	1,495	1,955	0.22%	3.34%
Champaign	6,592	8,184	8,864	11,591	10,834	1.61%	-0.65%
Champaign city	56,837	58,133	63,502	67,959	81,055	1.07%	1.93%
Colfax	412	355	271	250	266	-0.89%	0.64%
Compromise	1,707	1,588	1,525	1,422	1,463	-0.36%	0.29%
Condit	407	477	467	511	500	0.57%	-0.22%
Crittenden	384	312	315	345	325	-0.38%	-0.58%
Cunningham	33,976	35,978	36,344	37,362	41,250	0.54%	1.04%
East Bend	821	817	814	880	584	-0.72%	-3.36%
Harwood	471	625	589	618	623	0.81%	0.08%
Hensley	629	1,254	1,073	1,111	1,278	2.58%	1.50%
Kerr	225	177	200	173	163	-0.69%	-0.58%
Ludlow	5,750	5,114	4,744	4,766	4,278	-0.64%	-1.02%
Mahomet	3,862	6,909	8,440	10,113	12,623	5.67%	2.48%
Newcomb	617	805	921	1,004	1,292	2.74%	2.87%
Ogden	1,373	1,574	1,397	1,601	1,680	0.56%	0.49%
Pesotum	864	994	931	849	845	-0.05%	-0.05%
Philo	1,453	1,483	1,480	1,768	1,954	0.86%	1.05%
Rantoul	22,568	18,139	15,691	11,257	11,273	-1.25%	0.01%
Raymond	581	529	459	437	418	-0.70%	-0.43%
Sadorus	1,296	1,189	1,126	1,039	967	-0.63%	-0.69%
St. Joseph	2,494	3,612	3,694	4,611	5,876	3.39%	2.74%
Scott	1,181	1,094	1,059	1,157	1,258	0.16%	0.87%
Sidney	1,378	1,358	1,521	1,609	1,733	0.64%	0.77%
Somer	1,321	1,238	1,282	1,421	1,268	-0.10%	-1.08%
South Homer	1,722	1,617	1,624	1,585	1,601	-0.18%	0.10%
Stanton	546	513	474	474	505	-0.19%	0.65%
Tolono	2,853	3,410	3,574	3,757	5,270	2.12%	4.03%
Urbana	8,620	8,795	8,675	8,063	7,451	-0.34%	-0.76%

Source: U.S. Census Bureau

Mahomet, and the greater percentages of decline occurred in Rantoul and Foosland. Figure 1, at the top of page 6, shows the population trends for several municipalities in Champaign County from 1960 to 2010. At the time of this publication, no issues are being challenged with Census 2010 data.

Tables 1 and 2 both include revised population totals from Census 2000 for Brown Township, Champaign City Township, Cunningham Township, as well as for the City of Champaign, the Village of Rantoul, and the City of Urbana. These populations were revised because a major population error was discovered shortly after the release of the 2000 data in which 1,471 persons of group quarters populations were incorrectly assigned to block 4055, census tract 15 in Brown Township. In reality, this

block is a field next to a railroad. The 1,471 persons were reassigned to the previously mentioned townships and municipalities within Champaign County.

Table 3 shows population comparisons from 1970 to 2010 for Champaign County and other Central Illinois counties including Macon, McLean, Peoria, and Sangamon. From 1970 to 2010, McLean County experienced the greatest percent growth and Macon County and Peoria County had the greatest percent of population decline.

Table 4 provides intercensal estimates from 2000 to 2009 for cities and villages in Champaign County and the Champaign MSA which is comprised of Champaign, Ford, and Piatt Counties.

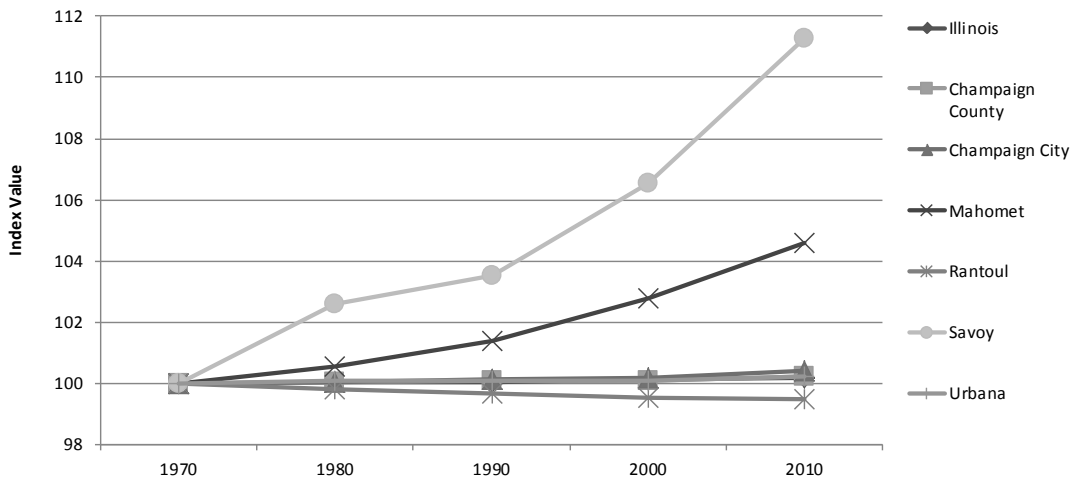
Table 2: Population Trends in Champaign County Municipalities: 1970, 1980, 1990, 2000, and 2010

Area	1970	1980	1990	2000	2010	Avg. Annual % Change 1970-2010	Avg. Annual % Change 2000-2010
Illinois	11,110,285	11,427,429	11,430,602	12,419,593	12,830,632	0.39%	0.33%
County	163,281	168,392	173,025	179,669	201,081	0.58%	1.19%
Bondville	446	442	354	455	443	-0.02%	-0.26%
Broadlands	315	346	340	312	349	0.27%	1.19%
Champaign City	56,837	58,133	63,502	67,959	81,055	1.07%	1.93%
Fisher	1,525	1,572	1,526	1,647	1,881	0.58%	1.42%
Foosland	172	153	132	90	101	-1.03%	1.22%
Gifford	814	848	845	838	975	0.49%	1.63%
Homer	1,354	1,279	1,264	1,200	1,193	-0.30%	-0.06%
Ivesdale (part) ¹	353	337	339	288	267	-0.61%	-0.73%
Longview	224	207	180	153	153	-0.79%	0.00%
Ludlow	531	397	323	324	371	-0.75%	1.45%
Mahomet	1,296	1,986	3,103	4,877	7,258	11.50%	4.88%
Ogden	703	818	671	743	810	0.38%	0.90%
Pesotum	536	651	558	521	551	0.07%	0.58%
Philo	1,022	973	1,028	1,314	1,466	1.09%	1.16%
Rantoul	25,562	20,161	17,212	12,918	12,941	-1.23%	0.02%
Royal	197	274	217	279	293	1.22%	0.50%
Sadorus	454	435	469	426	416	-0.21%	-0.23%
St. Joseph	1,554	1,900	2,052	2,912	3,967	3.88%	3.62%
Savoy	592	2,126	2,674	4,476	7,280	28.24%	6.26%
Sidney	915	886	1,027	1,062	1,233	0.87%	1.61%
Thomasboro	806	1,242	1,250	1,233	1,126	0.99%	-0.87%
Tolono	2,027	2,434	2,605	2,700	3,447	1.75%	2.77%
Urbana	33,976	35,978	36,344	37,362	41,250	0.54%	1.04%

Source: U.S. Census Bureau

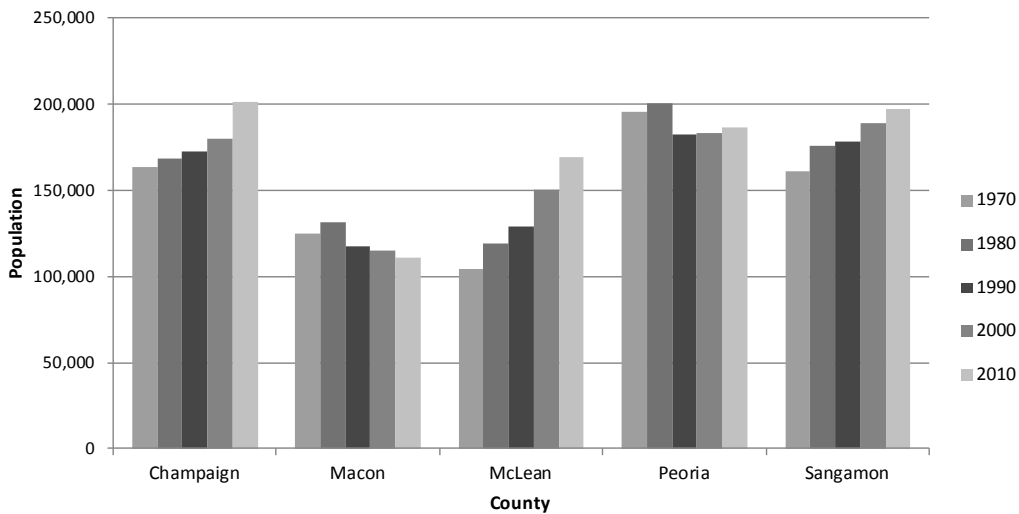
Notes: ¹ Only parts of Ivesdale are located within Champaign County

Figure 1: Population Trends of Selected Municipalities in Champaign County



Source: U.S. Census Bureau

Figure 2: Population Comparisons of Selected Illinois Counties: 1970-2010



Source: U.S. Census Bureau

Table 3: Population Comparisons of Selected Central Illinois Counties: 1970, 1980, 1990, 2000, and 2010

Area	1970	1980	1990	2000	2010	% Change 1970-2010	% Change 2000-2010
Illinois	11,110,285	11,427,409	11,430,602	12,419,593	12,830,632	15.5%	3.3%
Champaign	163,281	168,392	173,025	179,669	201,081	23.2%	11.9%
Macon	125,010	131,375	117,206	114,706	110,768	-11.4%	-3.4%
McLean	104,389	119,149	129,180	150,433	169,572	62.4%	12.7%
Peoria	195,318	200,466	182,827	183,433	186,494	-4.5%	1.7%
Sangamon	161,335	176,070	178,386	188,951	197,465	22.4%	4.5%

Source: U.S. Census Bureau

Table 4: Recent Population Trends 2000-2009

Area	Census 2000	2000	2001	2002	2003	2004	2005	2006	2007	2008	2009
Illinois	12,419,293	12,437,645	12,507,833	12,558,229	12,597,981	12,645,295	12,674,452	12,718,011	12,779,417	12,842,954	12,910,409
Champaign, MSA	210,275	210,501	211,790	213,353	215,649	216,860	218,494	221,242	223,586	224,191	226,132
Champaign County	179,669	179,919	181,320	183,101	185,323	186,459	188,020	190,738	193,015	193,636	195,671
Bondville	455	455	457	459	461	458	456	449	444	438	443
Broadlands	312	314	312	312	309	309	311	311	310	305	310
Champaign	67,518	70,341	71,023	72,150	73,610	74,175	74,872	77,320	78,741	79,389	80,286
Fisher	1,647	1,650	1,647	1,650	1,658	1,653	1,667	1,721	1,745	1,755	1,764
Foosland	90	90	90	90	89	89	88	87	86	85	86
Gifford	815	847	881	918	955	990	1,005	1,006	996	993	993
Homer	1,200	1,199	1,193	1,190	1,183	1,167	1,166	1,150	1,138	1,122	1,130
Ivesdale	288	289	288	286	285	284	283	279	276	272	274
Longview	153	153	152	152	151	150	150	148	146	144	145
Ludlow	324	372	370	372	374	375	374	368	366	361	365
Mahomet	4,877	5,043	5,141	5,340	5,531	5,606	5,840	6,038	6,235	6,422	6,664
Ogden	743	747	749	753	746	746	743	736	729	719	722
Pesotum	521	520	518	517	514	507	511	505	506	499	500
Philo	1,314	1,324	1,365	1,410	1,452	1,495	1,543	1,580	1,602	1,608	1,608
Rantoul	12,857	12,930	12,964	12,895	12,825	12,675	12,576	12,464	12,347	12,189	12,247
Royal	279	273	275	276	273	273	273	273	271	267	268
Sadorus	426	426	423	420	416	410	410	404	400	395	397
St. Joseph	2,912	2,957	3,012	3,074	3,265	3,457	3,657	3,828	3,954	4,023	4,051
Savoy	4,476	4,502	4,580	4,666	4,741	4,805	4,878	4,910	5,554	5,579	5,668
Sidney	1,062	1,069	1,079	1,085	1,088	1,098	1,111	1,114	1,124	1,127	1,131
Thomasboro	1,233	1,234	1,237	1,242	1,237	1,231	1,231	1,222	1,216	1,209	1,239
Tolono	2,700	2,714	2,716	2,715	2,726	2,757	2,797	2,819	2,837	2,836	2,882
Urbana	36,395	37,909	38,136	38,236	38,398	38,631	38,827	39,075	39,336	39,641	39,985
Unincorporated Champaign County	37,072	32,561	32,712	32,893	33,036	33,118	33,251	32,931	32,656	32,258	32,513

Source: Census 2000, July 2009 Population Estimates Release, U.S. Census Bureau

Population Distribution by Age and Sex

Table 5 provides information about the population distribution by age and sex in Champaign County for 1990, 2000, and 2010. Figure 3 below illustrates age and sex population distributions for 2010. The number of males and females is currently near even, with the majority being female. For the past decennial censuses, males have been the majority. The age group with the highest number

of males is 20-24, and the age group with the highest number of females is also 20-24. The 30-34 age group has experienced the largest decline in percentage of both males and females.

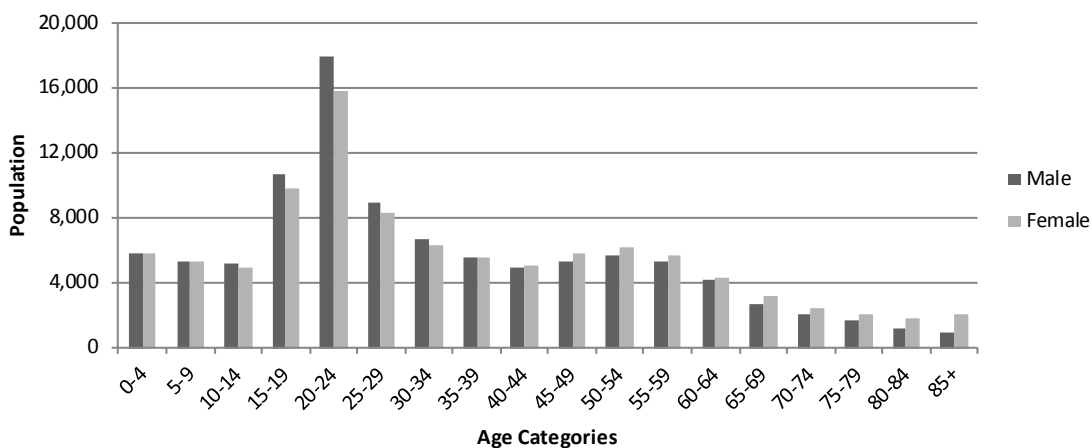
Figure 4 shows the components of these population trends by sex and age in Champaign County from 1960 to 2010.

Table 5: Champaign County Populations Distribution by Age and Sex: 1990, 2000, and 2010

Age Group	1990			2000			2010			% Change 1990 - 2010		
	Male	Female	Total	Male	Female	Total	Male	Female	Total	Male	Female	Total
0-4	6,105	5,742	11,847	5,323	5,094	10,417	5,817	5,841	11,658	-4.7%	1.7%	-1.6%
5-9	5,631	5,391	11,022	5,472	5,095	10,567	5,359	5,278	10,637	-4.8%	-2.1%	-3.5%
10-14	4,863	4,583	9,446	5,502	5,088	10,590	5,206	5,005	10,211	7.1%	9.2%	8.1%
15-19	9,256	8,272	17,528	10,440	9,274	19,714	10,724	9,783	20,507	15.9%	18.3%	17.0%
20-24	14,689	12,454	27,143	15,059	12,904	27,963	18,006	15,843	33,849	22.6%	27.2%	24.7%
25-29	8,972	8,120	17,092	7,631	6,947	14,578	8,943	8,293	17,236	-0.3%	2.1%	0.8%
30-34	7,959	7,631	15,590	6,101	5,754	11,855	6,646	6,364	13,010	-16.5%	-16.6%	-16.5%
35-39	6,691	6,445	13,136	5,840	5,998	11,838	5,620	5,587	11,207	-16.0%	-13.3%	-14.7%
40-44	5,302	5,021	10,323	6,044	6,288	12,332	4,987	5,069	10,056	-5.9%	1.0%	-2.6%
45-49	3,688	3,798	7,486	5,508	5,818	11,326	5,364	5,822	11,186	45.4%	53.3%	49.4%
50-54	3,032	3,163	6,195	4,513	4,585	9,098	5,750	6,223	11,973	89.6%	96.7%	93.3%
55-59	2,817	2,916	5,733	3,104	3,426	6,530	5,266	5,751	11,017	86.9%	97.2%	92.2%
60-64	2,542	2,813	5,355	2,588	2,803	5,391	4,150	4,318	8,468	63.3%	53.5%	58.1%
65-69	2,133	2,640	4,773	2,245	2,567	4,812	2,676	3,144	5,820	25.5%	19.1%	21.9%
70-74	1,646	2,199	3,845	1,962	2,340	4,302	2,044	2,416	4,460	24.2%	9.9%	16.0%
75-79	1,134	1,787	2,921	1,406	2,147	3,553	1,675	2,117	3,792	47.7%	18.5%	29.8%
80-84	620	1,305	1,925	920	1,605	2,525	1,203	1,811	3,014	94.0%	38.8%	56.6%
85+	412	1,253	1,665	648	1,630	2,278	954	2,026	2,980	131.6%	61.7%	79.0%
Totals	87,492	85,533	173,025	90,306	89,363	179,669	100,390	100,691	201,081	14.7%	17.7%	16.2%

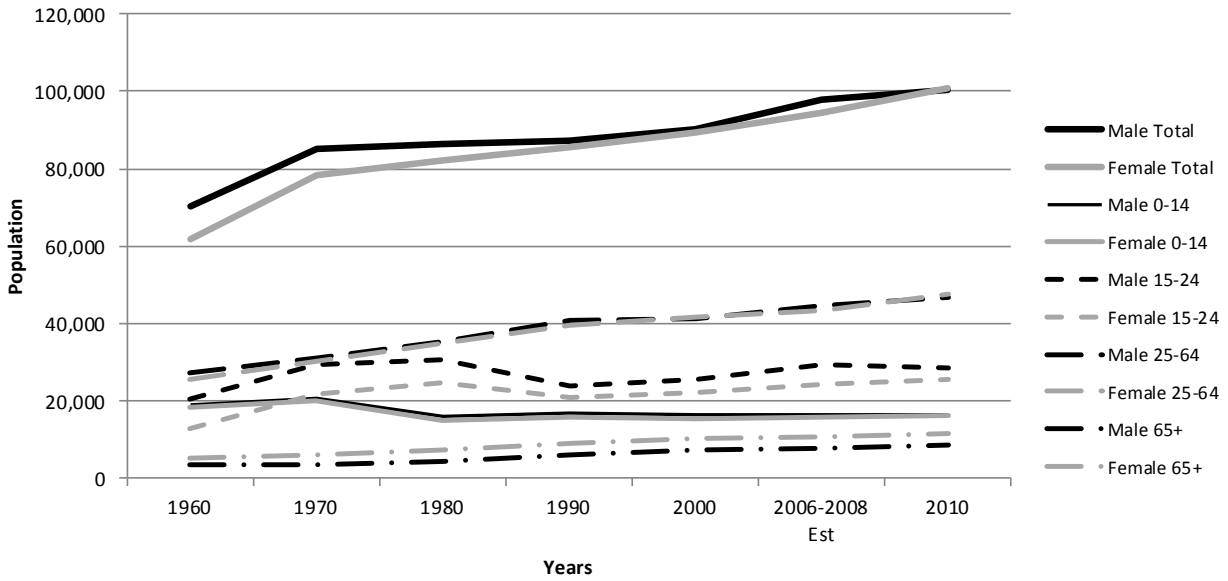
Source: U.S. Census Bureau

Figure 3: Populations in Champaign County by Age and Sex: 2010



Source: U.S. Census Bureau

Figure 4: Champaign County Population by Age and Sex: 1960, 1970, 1980, 1990, 2000 and 2010



Source: U.S. Census Bureau

Population by Race and Ethnicity

Census 2010 continued race and ethnicity options developed for Census 2000 where respondents were given the option of selecting one or more race categories. In the following tables, the “other” column for 2000 and 2010 includes respondents of some other race as well as those of two or more races. The “other” column for 1990 only includes those respondents of a single other race, preventing direct comparison for this category between years prior to 1990 and after. In 2000, respondents of two or more races accounted for 2 percent of the population of Champaign County; in 2010, respondents of two or more races accounted for 2.7 percent of the population. This category primarily consisted of respondents who were both White and Black, White and Asian, White and some other race, and White and American Indian or Alaska Native.

Race and Ethnicity statistics for 2010 show that Champaign County is becoming more diverse. This is primarily seen in larger communities, however smaller communities within the County are also more diverse.

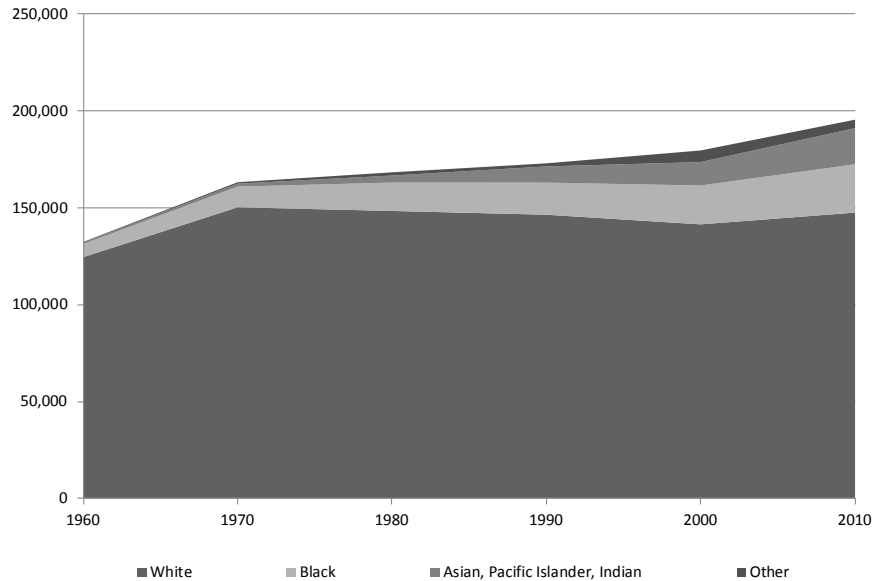
Hispanic is not a racial category but rather an ethnic category in which people are classified based on any number of cultural identities including language, country of origin, and lineage or parents’ ancestry. Hispanics can be of any race. Table 7 and Table 8 present the population by race for the townships and municipalities in Champaign County, respectively.

In 2000, 1,471 persons of the group quarters population were incorrectly attributed to Brown Township. These 1,471 persons were reallocated to the City of Champaign, Champaign City Township, the City of Urbana, Cunningham Township, the Village of Rantoul, and the Rantoul Township. The population totals have been corrected, but the Census Bureau does not release characteristics of the revised population of each jurisdiction. The number of people of each race will not sum to the population total for the marked (*) jurisdictions, and the race and ethnic breakdowns of these townships have not been corrected.

From 1970 to 2000, the white population of Champaign County declined relative to other race categories and by 8,802 people in absolute terms. However, between 2000-2010, the white population of Champaign County increased by over 4 percent resulting in the first gain in 3 decades. Between 1970 to 2010, the Black and African American population increased by 134 percent. The Asian, Pacific Islander, and Indian population grew by over 1,132 percent for the same time period. Due to the inconsistency in defining the “other” category, a trend for that race category is difficult to determine. The decrease in respondents selecting the “other” category is likely due to a better understanding of race and ethnicity. Census 2010 respondents were more likely to select specific race and ethnicity categories than in the past.

Table 7 and Table 8 list the population by race for Champaign County and its Townships for 2000 and 2010.

Figure 5: Population Totals by Race in Champaign County



Source: U.S. Census Bureau

Table 6: Population by Race in Champaign County: 1960, 1970, 1980, 1990, 2000, and 2010

Year	Total	White	Black	Asian, Pacific Islander, Indian	Other
1960	132,436	124,600	6,770	718	348
1970	163,281	150,338	10,677	1,513	753
1980	168,392	148,445	14,661	3,610	1,676
1990	173,025	146,506	16,559	8,364	1,596
2000	179,669	141,536	20,045	12,097	5,991
2010	201,081	147,600	24,946	18,652	4,361
Change 1970-2010	37,800	-2,738	14,269	17,139	-1,630¹
% Change 1970-2010	23.15%	-1.82%	133.64%	1132.78%	-27.21%¹

Source: U.S. Census Bureau

Notes: * Reflects numbers that are not statistically significant; 1 Reflects the changes from 2000 to 2010 not 1970 to 2010.

Table 7: Population by Race for Champaign County and its Townships: 2000 & 2010

Municipality	White		Black or African American		AIAN ¹		Asian		NHPI ²		Other ³		Total		Hispanic or Latino Origin ⁴	
	2000	2010	2000	2010	2000	2010	2000	2010	2000	2010	2000	2010	2000	2010	2000	2010
Allerton village	--	--	--	--	--	--	--	--	--	--	--	--	--	--	7	7
Bondville village	434	433	2	1	7	0	1	3	0	0	11	2	455	443	8	6
Broadlands village	303	343	2	1	4	0	0	1	0	0	3	1	312	349	0	4
Champaign city *	49,398	54,918	10,543	12,680	159	205	4,611	8,566	23	58	2,784	2,203	67,959	81,055	2,724	5,111
Fisher village	1,628	1,846	0	0	4	0	0	8	0	0	15	9	1,647	1,881	5	34
Foosland village	90	99	0	1	0	1	0	0	0	0	0	0	90	101	0	1
Gifford village *	797	952	8	4	1	4	4	3	0	0	5	12	838	975	3	16
Homer village	1,186	1,171	1	2	0	2	6	8	0	0	7	0	1,200	1,193	3	15
Ivesdale village	286	266	0	0	0	0	0	0	0	0	2	0	288	267	0	1
Longview village	151	150	0	0	1	0	0	0	0	0	1	0	153	153	3	3
Ludlow village	313	344	8	5	0	5	0	9	0	0	3	1	324	371	1	1
Mahomet village	4,788	6,959	7	42	5	15	29	130	0	0	48	32	4,877	7,258	46	145
Ogden village	737	797	2	1	1	4	0	3	0	0	3	1	743	810	9	8
Pesotum village	516	535	0	1	0	5	2	6	0	0	3	0	521	551	1	13
Philo village	1,301	1,441	4	6	0	2	0	1	0	0	9	1	1,314	1,466	4	5
Rantoul village *	9,860	8,597	2,170	2,940	60	75	225	215	7	9	535	502	12,918	12,941	346	1,252
Royal village	279	279	0	0	0	0	0	0	0	0	0	0	279	293	0	4
Sadorus village	418	401	0	4	1	0	0	0	0	0	7	0	426	416	0	4
St. Joseph village	2,880	3,853	3	14	2	21	7	21	0	0	20	26	2,912	3,967	25	96
Savoy village	3,644	5,637	202	497	7	6	485	917	2	0	136	49	4,476	7,280	95	197
Sidney village	1,037	1,208	4	11	3	4	3	1	5	0	10	2	1,062	1,233	4	13
Thomasboro village	1,176	1,050	16	30	3	4	9	5	1	2	28	4	1,233	1,126	15	21
Tolono village	2,640	3,312	8	29	14	14	4	25	3	0	31	13	2,700	3,447	25	44
Urbana city *	24,389	24,902	5,218	6,726	64	111	5,181	7,328	14	58	1,529	850	37,362	41,250	1,288	2,165
Champaign County	141,536	147,600	20,045	24,946	433	549	11,592	17,969	72	134	5,991	4,361	179,669	201,081	5,203	10,607
Illinois *	9,125,471	9,322,831	1,876,875	1,937,671	31,006	73,161	423,603	473,649	4,610	11,848	957,728	847,369	12,419,593	12,419,293	1,530,262	2,027,578

Sources: Census 2000, Summary File 1, U.S. Census Bureau; Census 2010, Summary File 1, U.S. Census Bureau;

Notes: ¹ AIAN = American Indian or Alaska Native. ² NHPI = Native Hawaiian or other Pacific Islander. ³ For the Census 2000, respondents were given the option of selecting one or more race categories to indicate their racial identities. In this table, the "Other" column for 2000 includes respondents of some other race and those of two or more races. The "Other" column for 1990 only indicates those respondents of some other race. The Census 2000 data on race are not directly comparable with data from the 1990 census or earlier censuses. ⁴ The federal government considers race and Hispanic origin to be two separate and distinct concepts. Thus, the "Hispanic or Latino Origin" column is not a component of the "Total" column.

* For the Census 2000, 1,471 persons of the group quarter population were incorrectly attributed to Brown Township. These 1,471 persons were reallocated to the City of Champaign, the Village of Rantoul, and the City of Urbana. The population totals have been corrected, but the Census Bureau does not release corrected data pertaining to the race, age, sex, and other characteristics of the revised population in each jurisdiction. The number of people of each race will not sum to the population total for the marked (*) jurisdictions, and the racial breakdowns of these townships have not been corrected. Population corrections were also made to Illinois and Gifford in 2000. The revised information is available at <http://www.census.gov/prod/cen2000/notes/errata.pdf>

Table 8: Population by Race for Champaign County and its Municipalities: 2000 & 2010

Municipality	White		Black or African American		AIAN ¹		Asian		NHPI ²		Other ³		Total		Hispanic or Latino Origin ⁴		
	2000	2010	2000	2010	2000	2010	2000	2010	2000	2010	2000	2010	2000	2010	2000	2010	
Ayers	432	443	2	2	4	0	0	0	1	0	0	3	1	441	453	0	6
Brown	1,480	1,951	0	2	4	2	0	0	10	0	0	11	12	1,495	1,995	7	39
Champaign	9,687	8,573	629	766	16	18	972	1,130	1	0	286	104	11,591	10,834	196	333	
Champaign City*	49,398	54,918	10,543	12,680	159	205	4,611	8,566	23	58	2,784	2,203	67,959	81,055	2,724	5,111	
Colfax	250	254	0	0	0	0	0	1	0	0	0	0	250	266	2	3	
Compromise	1,389	1,437	11	1	2	2	7	5	1	0	12	6	1,422	1,463	7	16	
Condit	498	487	5	2	3	2	1	2	0	0	4	0	511	500	7	7	
Crittenden	343	320	0	0	0	0	1	0	0	0	1	0	345	325	3	6	
Cunningham*	24,389	24,902	5,218	6,726	64	111	5,181	7,328	14	58	1,529	850	36,362	41,250	1,288	2,165	
East Bend	865	565	0	7	6	2	1	0	0	0	8	4	880	584	13	1	
Harwood	568	592	26	14	0	0	1	1	0	0	23	8	618	623	26	23	
Hensley	819	854	244	332	0	4	15	20	0	0	33	12	1,111	1,278	32	39	
Kerr	173	159	0	1	0	0	0	0	0	0	0	0	173	163	0	1	
Ludlow	3,670	3,210	766	679	20	10	112	89	0	3	198	106	4,766	4,278	111	254	
Mahomet	9,884	12,021	39	124	20	19	56	189	4	0	110	83	10,113	12,623	88	256	
Newcomb	980	1,267	6	5	2	4	6	4	0	0	10	3	1,004	1,292	10	11	
Ogden	1,574	1,650	3	2	1	10	6	3	0	0	17	4	1,601	1,680	9	12	
Pesotum	842	814	0	5	0	5	4	9	0	2	3	0	849	845	2	13	
Philo	1,752	1,914	5	8	0	3	0	3	0	0	11	1	1,768	1,954	5	6	
Rantoul*	9,059	7,763	1,478	2,324	52	72	154	147	8	9	445	478	11,257	11,273	319	1,143	
Raymond	425	407	0	0	1	1	2	0	0	0	9	0	437	418	6	3	
Sadorus	1,015	937	1	8	2	0	0	3	0	0	21	0	1,039	967	1	8	
St. Joseph	4,565	5,723	6	16	3	7	8	29	0	1	29	31	4,611	5,876	35	116	
Scott	1,120	1,167	4	25	7	5	2	31	1	0	23	12	1,157	1,258	10	20	
Sidney	1,575	1,699	5	12	5	4	5	2	5	0	14	2	1,609	1,733	4	19	
Somer	1,267	1,044	90	146	10	3	9	40	1	0	44	6	1,421	1,268	22	37	
South Homer	1,570	1,570	1	5	0	1	6	9	0	0	8	0	1,585	1,601	4	16	
Stanton	464	497	0	1	0	1	4	2	0	0	6	0	474	505	11	1	
Tolono	3,637	4,912	38	138	14	16	17	93	4	0	47	21	3,757	5,270	33	83	
Urbana*	6,825	5,550	695	915	37	42	273	253	10	3	221	414	8,063	7,451	158	863	
Champaign County	141,536	147,600	20,045	24,946	433	549	11,592	17,969	72	134	5,991	4,361	179,669	201,081	5,133	10,607	

Sources: Census 2000, Summary File 1, U.S. Census Bureau; Census 2010, Summary File 1, U.S. Census Bureau.

Notes: ¹ AIAN = American Indian or Alaska Native; ² NHPI = Native Hawaiian or other Pacific Islander; ³ For the Census 2000, respondents were given the option of selecting one or more race categories to indicate their racial identities. In this table, the "Other" column for 2000 includes respondents of some other race and those of two or more races. The "Other" column for 1990 only indicates those respondents of some other race. The Census 2000 data on race are not directly comparable with data from the 1990 census or earlier censuses; ⁴ The federal government considers race and Hispanic origin to be two separate and distinct concepts. Thus, the "Hispanic or Latino Origin" column is not a component of the "Total" column.

* For the Census 2000, 1,471 persons of the group quarter population were incorrectly attributed to Brown Township. These 1,471 persons were reallocated to the City of Champaign, the Village of Rantoul, and the City of Urbana. The population totals have been corrected, but the Census Bureau does not release corrected data pertaining to the race, age, sex, and other characteristics of the revised population in each jurisdiction. The number of people of each race will not sum to the population total for the marked (*) jurisdictions, and the racial breakdowns of these townships have not been corrected. Population corrections were also made to Illinois and Gifford in 2000. The revised information is available at <http://www.census.gov/prod/cen2000/notes/errata.pdf>

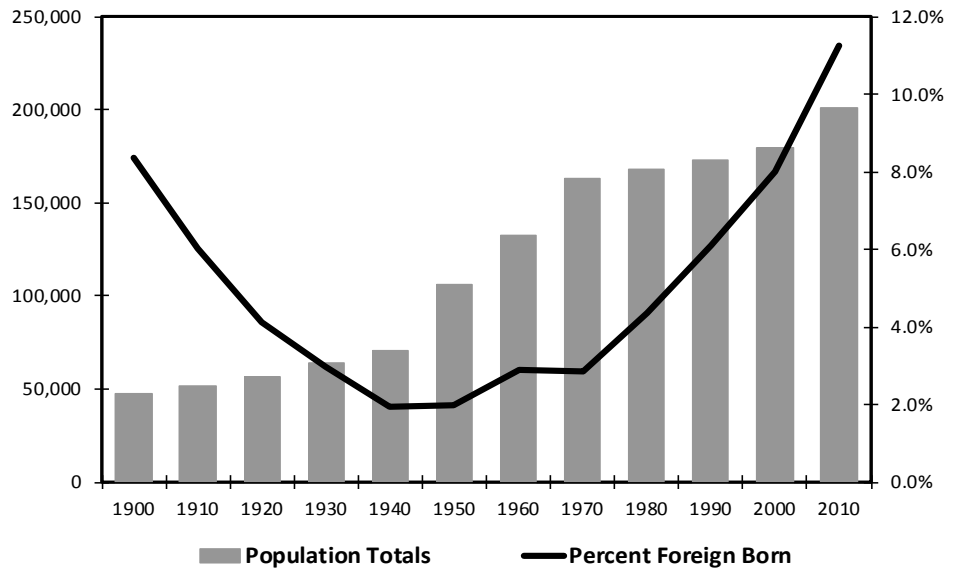
Foreign-Born Population

The foreign born population is comprised of those persons who are not U.S. citizens at birth. Data on the foreign-born population is available through the U.S. Census Bureau at www.census.gov.

Figure 7 shows both the total population and the percentage of the foreign born population in Champaign County from 1900 to 2010. The percentage of foreign-born population decreased significantly from 1900 to 1950, while the percentage of foreign-born population increased from 1960 to 2010.

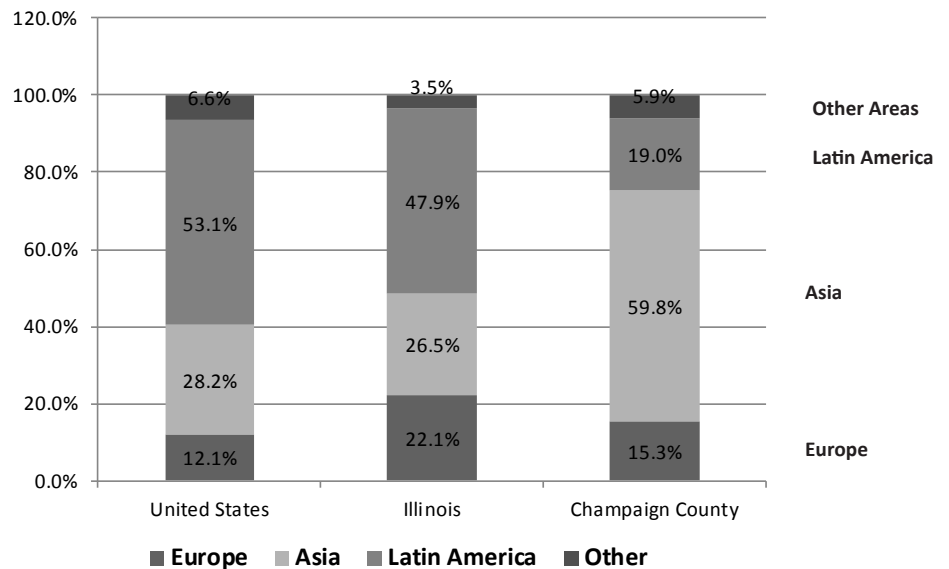
The U.S. Census Bureau also provides information about the place of birth for the foreign-born population. Figure 8 shows the foreign-born population by region of birth for the year 2010 for the United States, Illinois, and Champaign County. Champaign County has a much smaller percentage of persons born in Latin America than both Illinois and the United States, while Champaign County has a much larger percentage of persons born in Asia than both Illinois and the United States.

Figure 7: Total Population Compared to Percent Foreign-Born in Champaign County



Source: U.S. Census Bureau

Figure 8: Foreign-Born Population by Region of Birth: 2008~2010



Source: 2008-2010 American Community Survey 3-year estimates, U.S. Census Bureau

Components of Population Change

Table 9 provides information about the components of population change in Champaign County.

Data regarding population, birth, and deaths in Champaign County generally shows a slight decrease for the natural increase statistic overall between 1980 and 2008. The data shows relatively large periods of time where natural increase is relatively stable. From 1980 to 1991, natural increase ranged from 1,528 to 1,750. From 1994 to 2004, natural increase ranged from 1,042 to 1,153. Due to variation in annual population estimates and a highly transient population, it is difficult to determine whether natural increase or net migration is the primary cause of population change.

Population totals can be found at the Census Bureau website at www.census.gov, and information on the number of births and deaths is from the Illinois Department of Public Health. Natural increase was calculated by subtracting the number of deaths from the number of births. Population change during the year was calculated by subtracting the total population of one year from the population of the following year. Net migration is the difference between the population change and the natural increase.

Figure 8 illustrates the natural increase of population from 1980-2008, and also compares the natural increase to the fluctuations in migration from year to year. A sharp decrease in the population in the early 1990's can be attributed to the closing of the Chanute Air Force Base in Rantoul.

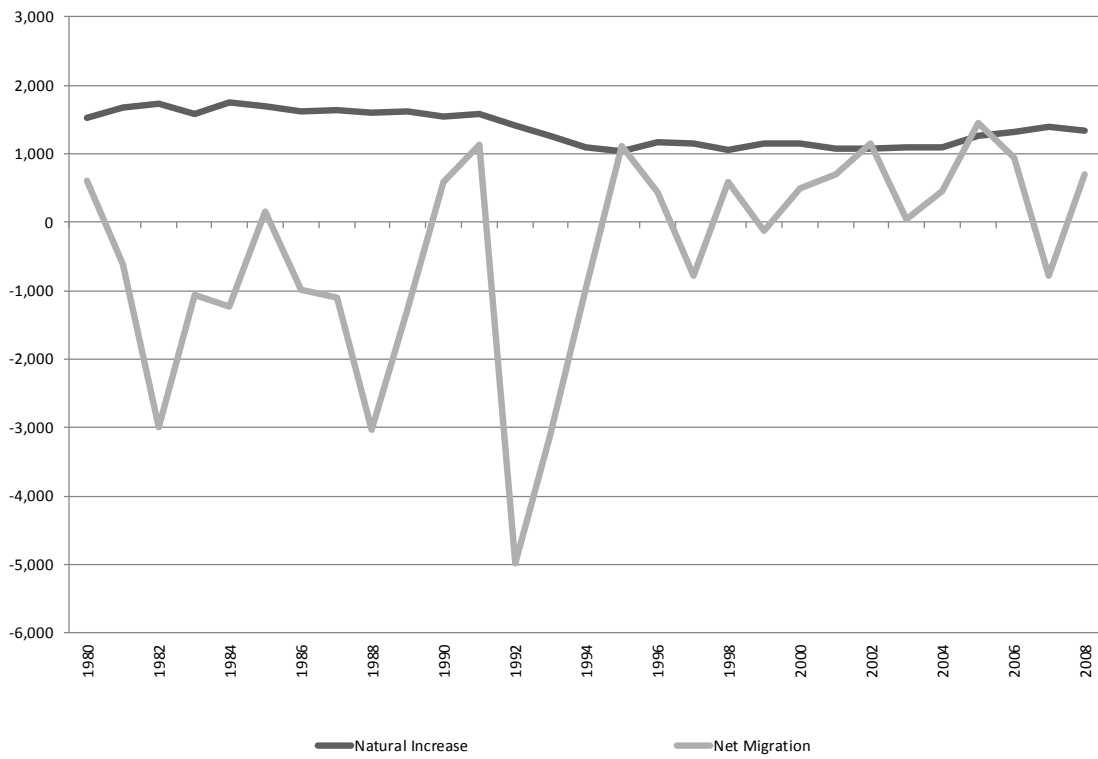
Table 9: Components of Champaign County Population Change: 1980-2010

Year	Population Estimate ¹	Births ²	Deaths ²	Natural Increase ³	Pop Change During Year ³	Net Migration ³
1980	168,392	2,548	1,020	1,528	2,138	610
1981	170,530	2,598	926	1,672	1,056	-616
1982	171,586	2,630	901	1,729	-1,275	-3,004
1983	170,311	2,535	950	1,585	528	-1,057
1984	170,839	2,660	910	1,750	516	-1,234
1985	171,355	2,652	953	1,699	1,860	161
1986	173,215	2,608	981	1,627	642	-985
1987	173,857	2,613	968	1,645	554	-1,091
1988	174,411	2,615	1,010	1,605	-1,418	-3,023
1989	172,993	2,662	1,037	1,625	348	-1,277
1990	173,341	2,574	1,035	1,539	2,127	588
1991	175,468	2,562	988	1,574	2,707	1,133
1992	178,175	2,426	1,018	1,408	-3,575	-4,983
1993	174,600	2,337	1,082	1,255	-1,869	-3,124
1994	172,731	2,240	1,146	1,094	128	-966
1995	172,859	2,117	1,075	1,042	2,159	1,117
1996	175,018	2,270	1,092	1,178	1,608	430
1997	176,626	2,175	1,023	1,152	378	-774
1998	177,004	2,128	1,063	1,065	1,648	583
1999	178,652	2,194	1,048	1,146	1,017	-129
2000	179,669	2,260	1,107	1,153	1,651	498
2001	181,320	2,312	1,241	1,071	1,781	710
2002	183,101	2,226	1,150	1,076	2,222	1,146
2003	185,323	2,288	1,187	1,101	1,136	35
2004	186,459	2,291	1,192	1,099	1,561	462
2005	188,020	2,490	1,218	1,272	2,718	1,446
2006	190,738	2,455	1,127	1,328	2,277	949
2007	193,015	2,508	1,115	1,393	621	-772
2008	193,636	2,482	1,147	1,335	-1,501	-2,836
2009	195,671	2,407	--	--	--	--
2010	201,081	--	--	--	--	--

Source: 1980 Census of Population and Housing, Census 1990, Census 2000, American Community Survey 1-year estimates (1980-2009), Census 2010, U.S. Census Bureau; Illinois Department of Public Health

Notes: ¹ Population totals for the years 1981 to 2009 are intercensal estimates from the U.S. Census Bureau as of July 1st of each year. Please note that the population base estimates from the decennial censuses are different than the intercensal estimates. Decennial census totals as of April 1st of each year: 1990 = 173,025 and 2000 = 179,669. The 1980 population total is a base estimate from the decennial census; ² Birth and death totals are from the Illinois Department of Public Health; ³ Natural Increase, Population Change, and Net Migration calculated from population, births, and deaths; -- Denotes data that is not yet available.

Figure 8: Natural Increase and Net Migration in Champaign County: 1980-2008



Source: U.S. Census Bureau; Illinois Department of Public Health