

INCOME AND POVERTY

Income & Poverty

Income is reported through three separate statistics. Median income, as a measure, divides the income distribution into two equal groups, one having incomes above the median, and the other having incomes below the median. The per capita income is the average obtained by dividing the aggregate income of an area by the total population of the area.

The median family income provides a statistic for family households only. A family is defined by the Census Bureau as a group of two or more people who reside together and who are related by birth, marriage, or adoption.

The median household income provides a statistic for both family households and non-family households. A non-family household may consist of a group of unrelated people or one person living alone. The median family income is usually larger than the median household income because the median household income includes those persons living alone in which there is only a single-person income source. The median family income, on the other hand, has a larger percentage of households with multi-person incomes.

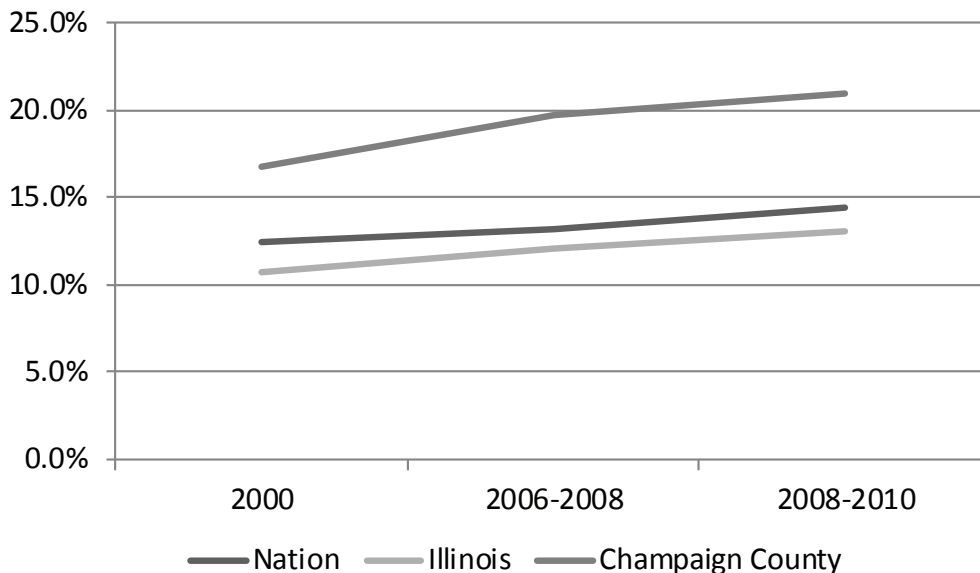
In Champaign County, the university student population tends to skew the household median income figures downward. Median family income is a better basis of comparison to other communities than either median household income or per capita income for the county. Table 22 and Figure 16 further illustrate this point by comparing the median and per capita incomes of Champaign-Urbana MSA to other metro areas in the state.

Table 23 and Figures 17 and 18 provide the number and percent of households and families with respect to their income range. Income ranges are not directly comparable between years because the ranges cannot be adjusted for inflation. However, general trends can be identified. The actual number of households and families earning less than \$10,000 increased overall but decreased for other low and middle income ranges (\$10,000 to \$50,000). The percentage of households and families earning low and middle income ranges (Less than \$10,000 through \$74,000) decreased while the percentage earning higher incomes increased. The greatest changes can be seen in the \$35,000 to \$49,999 and \$100,000 to \$149,999 ranges.

**Table 22: Poverty Status for Individuals:
2000, 2006~2008, and 2008~2010**

	2000	2006-2008	2008-2010
Nation	12.4%	▲13.2%	▲14.4%
Illinois	10.7%	▲12.1%	▲13.1%
Champaign County	16.8%	▲19.7%	▲21.0%

Figure 16: Poverty Status for Individuals



Source: Census 2000, 2006-2008 American Community Survey 3-Year Estimates, 2008-2010 American Community Survey 3-Year Estimates, U.S. Census Bureau
Notes: ▲ Denotes a MOE that is "Good" and has a 0%-20% Relative Reliability

Table 23: Households and Families Income Ranges: 2000 and 2006~2010

	Households				Families			
	Census 2000	ACS 2010 5-year	Census 2000 (%)	ACS 2010 5-year (%)	Census 2000	ACS 2010 5-year	Census 2000 (%)	ACS 2010 5-year (%)
Total	70,619	▲77,851	70,619	▲77,851	39,751	▲43,123	39,751	▲43,123
Less than \$10,000	8,408	▲ 9,137	11.9%	▲11.7%	1,813	▲ 2,077	4.9%	▲4.8%
\$10,000 to \$14,999	6,190	▲ 4,346	7.3%	▲5.6%	1,313	▲ 1,043	3.3%	▲2.4%
\$15,000 to \$24,999	10,114	▲ 9,477	14.3%	▲12.2%	3,629	▲ 3,404	9.1%	▲7.9%
\$25,000 to \$34,999	9,175	▲ 8,598	13.0%	▲11.0%	4,280	▲ 3,611	10.8%	▲8.4%
\$35,000 to \$49,999	11,529	▲ 10,212	16.3%	▲13.1%	7,434	▲ 5,762	18.7%	▲13.4%
\$50,000 to \$74,999	13,432	▲ 13,864	19.0%	▲17.8%	10,333	▲ 8,989	26.0%	▲20.8%
\$75,000 to \$99,999	6,407	▲ 8,844	9.1%	▲11.4%	5,343	▲ 6,881	13.4%	▲16.0%
\$100,000 to \$149,999	3,971	▲ 8,395	5.6%	▲10.8%	3,523	▲ 7,035	8.9%	▲16.3%
\$150,000 to \$199,999	1,351	▲ 2,772	1.9%	▲3.6%	1,201	▲ 2,391	3.0%	▲5.5%
\$200,000 or more	1,042	▲ 2,206	1.5%	▲2.8%	882	▲ 1,930	2.2%	▲4.5%

Figure 17: Household Income Range

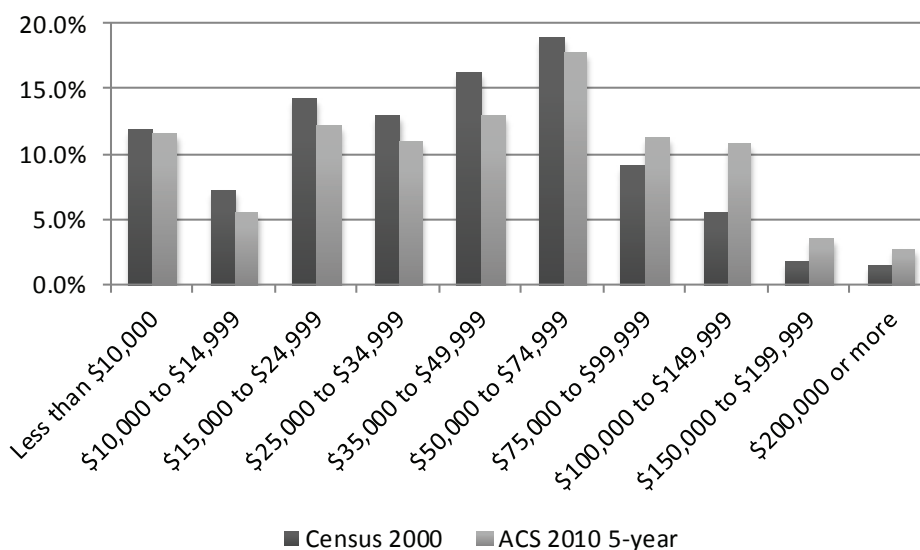
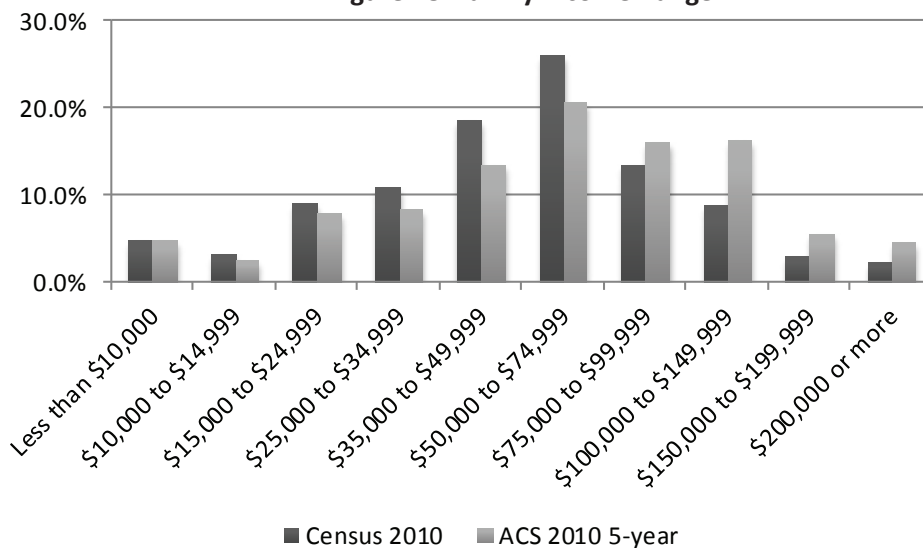


Figure 18: Family Income Range



Source: Census 2000, 2006-2008 American Community Survey 3-Year Estimates, 2008-2010 American Community Survey 3-Year Estimates, U.S. Census Bureau
 Notes: ▲ Denotes a MOE that is "Good" and has a 0%-20% Relative Reliability

Table 24: Income and Poverty Status of Champaign County & Its Municipalities: 1999 & 2006~2010

Area Name	Median Household Incomes			Median Family Incomes			Per Capita Incomes			Population with income below the poverty level			% Population below the poverty level ¹		
	1999	2006-2010 ACS Est.	MOE (+/-)	1999	2006-2010 ACS Est.	MOE (+/-)	1999	2006-2010 ACS Est.	MOE (+/-)	1999	2006-2010 ACS Est.	MOE (+/-)	1999	2006-2010 ACS Est.	MOE (+/-)
Illinois	\$46,590	▲\$55,735	264	\$55,545	▲\$68,236	328	\$23,104	▲\$28,782	121	1,291,958	▲1,572,048	19,393	10.7%	▲12.6%	0.2%
Champaign County	\$37,780	▲\$45,262	1,080	\$52,591	▲\$65,785	1,790	\$19,708	▲\$24,553	444	26,460	▲37,125	1871	16.1%	▲20.5%	0.9%
Bondville	\$41,250	▲\$40,208	11,588	\$38,462	▲\$45,750	10,117	\$17,439	▲\$18,490	3,477	53	▼104	87	11.9%	▼19.3%	13.7%
Broadlands	\$36,023	▲\$55,625	13,378	\$37,708	▲\$72,679	13,746	\$15,366	▲\$27,067	5,242	21	▼0	119	6.3%	▼0	34.8
Champaign	\$32,795	▲\$40,116	2,095	\$52,628	▲\$66,149	3,477	\$18,664	▲\$23,554	877	13,398	▲18,382	1,343	22.1%	▲26.2%	1.8%
Fisher	\$41,891	▲\$62,269	12,619	\$50,050	▲\$71,289	6,104	\$18,262	▲\$26,420	3,366	60	●155	99	3.6%	●7.9%	5.1%
Foosland	\$36,250	●\$50,938	24,287	\$53,125	●\$51,563	31,250	\$20,173	●\$14,217	7,371	13	▼6	9	15.5%	▼5.8%	9.6%
Gifford	\$46,667	▲\$56,375	10,252	\$55,375	▲\$65,875	9,585	\$22,040	▲\$24,130	2,697	14	●51	31	1.8%	●6.2%	3.9%
Homer	\$37,429	▲\$52,574	6,614	\$43,170	▲\$58,472	6,087	\$18,788	▲\$25,154	4,867	108	●82	62	9.1%	●7.8%	5.6%
Ivesdale	\$45,938	▲\$51,750	13,165	\$51,964	▲\$63,438	10,290	\$18,829	▲\$28,374	8,021	11	▼4	6	3.5%	▼1.6%	2.6%
Lake of the Woods	\$42,571	▲\$39,730	6,889	\$44,315	●\$43,125	15,429	\$19,938	▲\$21,024	4,113	264	●464	326	8.7%	●15.2%	10.3%
Longview	\$31,875	●\$31,875	21,680	\$32,917	●\$51,250	37,358	\$12,116	▲\$20,625	5,776	25	▼28	27	15.2%	▼21.9%	20.2%
Ludlow	\$22,083	▲\$38,611	10,025	\$41,875	▲\$50,125	11,919	\$19,507	▲\$18,711	2,860	44	●63	32	15.0%	●14.5%	7.0%
Mahomet	\$57,574	▲\$76,190	6,951	\$61,063	▲\$87,838	9,335	\$21,990	▲\$33,884	3,626	255	●260	158	5.1%	●3.8%	2.3%
Ogden	\$45,083	▲\$67,867	5,191	\$48,125	▲\$68,702	2,944	\$19,679	▲\$26,500	3,380	22	▼7	8	3.0%	▼0.9%	1.0%
Pesotum	\$49,107	▲\$60,795	9,802	\$58,250	▲\$67,917	4,229	\$21,191	▲\$27,685	3,308	14	▼13	11	2.8%	▼2.6%	2.2%
Philo	\$56,852	▲\$67,147	3,608	\$60,365	▲\$71,683	5,685	\$21,502	▲\$29,525	2,827	45	▼89	100	3.4%	▼5.8%	6.2%
Rantoul	\$36,904	▲\$35,700	5,566	\$43,543	▲\$49,873	7,523	\$17,948	▲\$21,617	2,197	1,366	▲2,593	620	10.7%	▲20.7%	4.8%
Royal	\$47,188	▲\$50,875	8,060	\$60,833	▲\$52,344	16,877	\$22,019	●\$31,006	11,432	2	▼0	119	0.6%	▼0.0%	13.0%
Sadorus	\$44,375	●\$57,679	25,819	\$42,083	▲\$67,292	8,963	\$18,540	▲\$22,177	2,559	14	●44	35	3.6%	●8.1%	6.7%
St. Joseph	\$53,424	▲\$62,207	4,903	\$61,094	▲\$74,048	5,887	\$21,381	▲\$26,431	2,343	124	●437	195	4.3%	●12.5%	5.1%
Savoy	\$48,500	▲\$50,172	6,896	\$61,927	▲\$77,581	11,338	\$25,949	▲\$30,428	2,843	378	●644	246	9.1%	●10.1%	3.7%
Sidney	\$51,563	▲\$50,700	7,608	\$55,987	▲\$59,722	13,769	\$21,425	▲\$21,726	2,765	10	●112	70	0.9%	●8.3%	4.9%
Thomasboro	\$39,667	▲\$53,750	7,549	\$47,212	▲\$56,944	6,623	\$17,866	▲\$26,276	3,326	58	▼38	34	4.8%	▼3.5%	3.2%
Tolono	\$44,200	▲\$49,659	10,668	\$51,763	▲\$57,978	7,676	\$19,894	▲\$23,408	3,059	152	●258	154	5.6%	●7.2%	4.2%
Urbana	\$27,819	▲\$34,951	2,552	\$42,655	▲\$55,522	3,009	\$15,969	▲\$19,850	1,085	8,306	▲9,898	899	27.3%	▲29.8%	2.6%

Source: Census 2000 Summary File 3; 2006-2010 American Community Survey 5-Year Estimates, U.S. Census Bureau

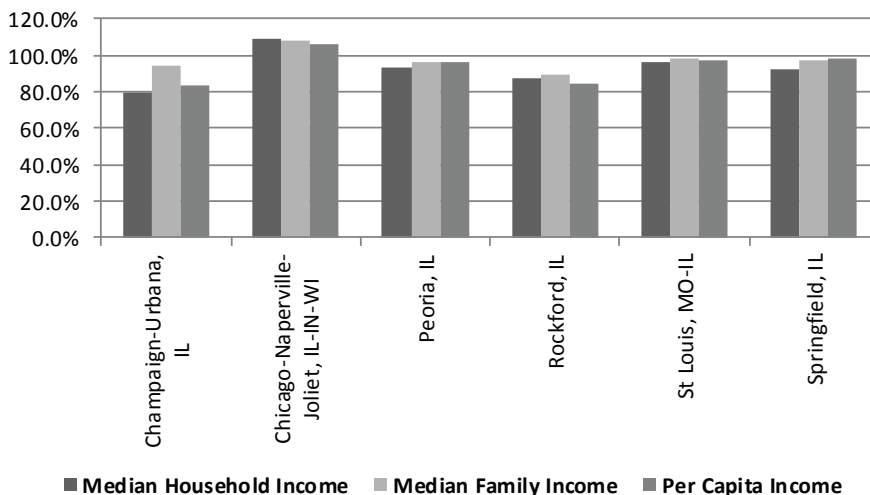
Notes: ▲ Denotes a MOE that is "Good" and has a 0%-20% Relative Reliability; ● Denotes a MOE that is "Fair" and has a 21%-50% Relative Reliability; ▼ Denotes a MOE that is "Poor" and has a 51%-100% Relative Reliability; ¹ % Population below poverty line = people below poverty line divided by population for whom poverty is determined and this population only includes those persons who do not reside in group quarters. People living in correctional facilities, nursing homes, mental hospitals, college dormitories, military barracks, group homes, missions, and shelters are considered a part of the group quarters population.

Table 24 also provides information about the population with income below the poverty level. This population only includes those persons who do not reside in group quarters. People living in correctional facilities, nursing homes, mental hospitals, college dormitories, military barracks, group homes, missions, and shelters are considered a part of the group-quarter population.

Figure 19 and Table 26 compares the three measures of income to other MSA's in the region.

The Census Bureau uses a set of money income thresholds that vary by family size and composition to decide who is poor. If the total income for a family or unrelated individuals falls below the relevant poverty threshold, then the family or individual is classified as being "below the poverty level." Poverty thresholds for 1999 and 2006-2010 are shown in Table 25. Information on poverty rates by race for Illinois, Champaign County, and the municipalities in Champaign County is presented in Table 27.

Figure 19: Incomes as a Percentage of State Average



Source: 2006-2010 American Community Survey, 5-Year Estimate, U.S. Census Bureau

Table 25: Poverty Threshold by Size of Family

Size of Family Unit	Weighted Average Thresholds (YEAR)	
	2000	2010
One Person	\$8,794	\$11,139
Two Persons	\$11,239	\$14,218
Three Persons	\$13,738	\$17,374
Four Persons	\$17,603	\$22,314
Five Persons	\$20,819	\$26,439
Six Persons	\$23,528	\$29,897
Seven Persons	\$26,754	\$34,009
Eight Persons	\$29,701	\$37,934
Nine or more	\$35,060	\$45,220

Table 26: Per Capita Personal Income in U.S., Illinois, and MSA's in Illinois: 1990, 2000, 2009

Area Name	1990		2000		2009	
	Per Capita Income	% of National Average	Per Capita Income	% of National Average	Per Capita Income	% of National Average
United States	\$20,387	100%	\$31,941	100%	\$41,223	100%
Bloomington-Normal	\$18,759	92.01%	\$29,808	93.32%	\$38,695	93.87%
Champaign-Urbana	\$17,490	85.79%	\$26,525	83.04%	\$34,624	83.99%
Chicago	\$22,507	110.4%	\$35,390	110.8%	\$44,379	107.66%
Davenport-Moline-Rock Island	\$18,177	89.16%	\$27,493	86.07%	\$38,670	93.81%
Decatur	\$18,218	89.36%	\$27,855	87.21%	\$39,174	95.03%
Kankakee	\$16,679	81.81%	\$25,103	78.59%	\$31,780	77.09%
Peoria-Pekin	\$18,435	90.43%	\$28,382	88.86%	\$39,818	96.59%
Rockford	\$18,788	92.16%	\$27,432	85.88%	\$31,970	77.55%
St. Louis, MO-IL	\$20,252	99.34%	\$31,746	99.39%	\$40,728	98.8%
Springfield, IL	\$20,015	98.18%	\$30,419	95.23%	\$40,467	98.17%

Source: U.S. Department of Labor, Bureau of Labor Statistics, <http://www.bea.doc.gov/bea/regional/reis/>

Table 27: Poverty Rate by Race for Illinois, Champaign County, & Its Municipalities: 2006~2010 estimates

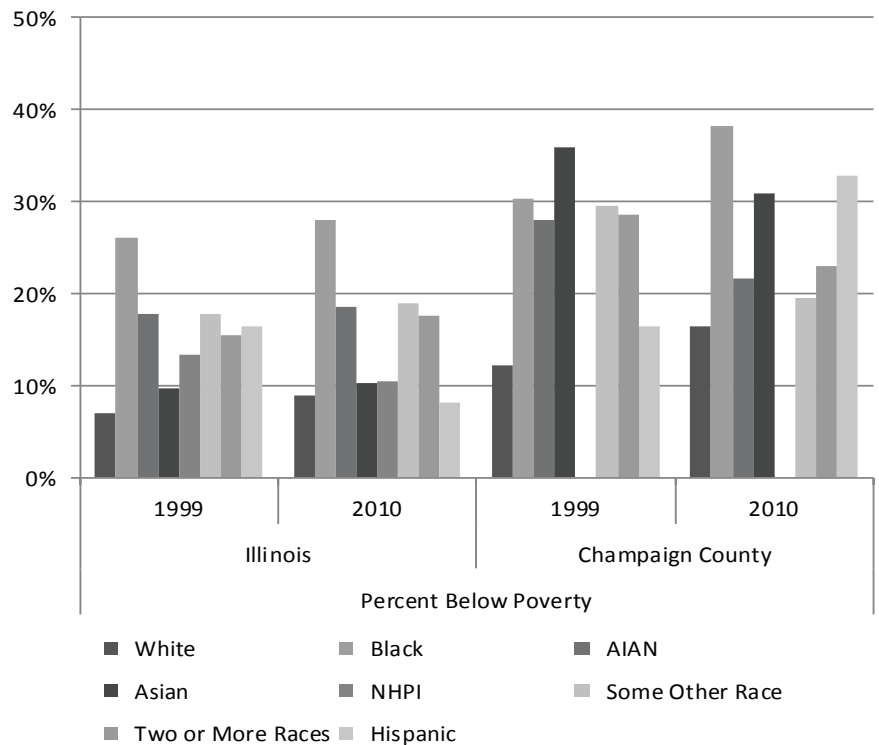
Area	Below the Poverty Level													
	# White	% White	# Black	% Black	# AIAN (1)	% AIAN (1)	# Asian	% Asian	# NHPI (2)	% NHPI (2)	# Some Other	% Some Other	# Two or More Races	% Two or More Races
Illinois	▲797,741	8.9%	▲500,705	28.0%	▲4,395	18.5%	▲57,424	10.2%	▲324	10.4%	▲173,864	19.0%	▲37,595	17.5%
Champaign County	▲22,364	16.4%	▲9,087	38.2%	●84	21.6%	▲4,389	30.8%	▼0	0.0%	●455	19.5%	▲746	23.0%
Allerton village	▼4	1.5%	▼0	0.0%	▼0	0.0%	▼0	0.0%	▼0	0.0%	▼0	0.0%	▼18	100.0%
Bondville village	●104	19.5%	▼0	0.0%	▼0	0.0%	▼0	0.0%	▼0	0.0%	▼0	0.0%	▼0	0.0%
Broadlands village	▼0	0.0%	▼0	0.0%	▼0	0.0%	▼0	0.0%	▼0	0.0%	▼0	0.0%	▼0	0.0%
Champaign city	▲10,932	23.0%	▲4,593	36.7%	●55	40.4%	▲2,117	29.2%	▼0	0.0%	●385	29.6%	●300	23.3%
Fisher village	●149	8.0%	▼4	57.1%	▼0	0.0%	▼2	4.8%	▼0	0.0%	▼0	0.0%	▼0	0.0%
Foosland village	▼6	5.8%	▼0	0.0%	▼0	0.0%	▼0	0.0%	▼0	0.0%	▼0	0.0%	▼0	0.0%
Gifford village	●51	6.4%	▼0	0.0%	▼0	0.0%	▼0	0.0%	▼0	0.0%	▼0	0.0%	▼0	0.0%
Homer village	●82	8.0%	▼0	0.0%	▼0	0.0%	▼0	0.0%	▼0	0.0%	▼0	0.0%	▼0	0.0%
Ivesdale village	▼4	1.6%	▼0	0.0%	▼0	0.0%	▼0	0.0%	▼0	0.0%	▼0	0.0%	▼0	0.0%
Longview village	▼28	22.0%	▼0	0.0%	▼0	0.0%	▼0	0.0%	▼0	0.0%	▼0	0.0%	▼0	0.0%
Ludlow village	●59	13.8%	▼0	0.0%	▼0	0.0%	▼0	0.0%	▼0	0.0%	▼0	0.0%	▼0	0.0%
Mahomet village	●233	3.6%	▼0	0.0%	▼0	0.0%	▼27	25.5%	▼0	0.0%	▼0	0.0%	▼0	0.0%
Ogden village	▼7	0.9%	▼0	0.0%	▼0	0.0%	▼0	0.0%	▼0	0.0%	▼0	0.0%	▼0	0.0%
Pesotum village	▼13	2.6%	▼0	0.0%	▼0	0.0%	▼0	0.0%	▼0	0.0%	▼0	0.0%	▼0	0.0%
Philo village	▼89	5.9%	▼0	0.0%	▼0	0.0%	▼0	0.0%	▼0	0.0%	▼0	0.0%	▼0	0.0%
Rantoul village	▲1,375	15.4%	●1,091	42.6%	▼0	0.0%	▼11	7.0%	▼0	0.0%	▼0	0.0%	●116	23.2%
Royal village	▼0	0.0%	▼0	0.0%	▼0	0.0%	▼0	0.0%	▼0	0.0%	▼0	0.0%	▼0	0.0%
Sadorus village	●44	8.4%	▼0	0.0%	▼0	0.0%	▼0	0.0%	▼0	0.0%	▼0	0.0%	▼0	0.0%
St. Joseph village	●418	12.4%	▼10	50.0%	▼0	0.0%	▼9	10.2%	▼0	0.0%	▼0	0.0%	▼0	0.0%
Savoy village	●461	10.2%	▼110	16.9%	▼0	0.0%	▼65	8.5%	▼0	0.0%	▼8	4.5%	▼0	0.0%
Sidney village	●107	8.5%	▼0	0.0%	▼0	0.0%	▼0	0.0%	▼0	0.0%	▼5	13.5%	▼0	0.0%
Thomasboro village	▼38	3.8%	▼0	0.0%	▼0	0.0%	▼0	0.0%	▼0	0.0%	▼0	0.0%	▼0	0.0%
Tolono village	●252	7.1%	▼0	0.0%	▼0	0.0%	▼0	0.0%	▼0	0.0%	▼0	0.0%	▼0	0.0%
Urbana city	▲5,358	24.9%	▲2,341	38.4%	▲29	22.1%	▲1,967	41.5%	▼0	0.0%	▼57	22.2%	●146	32.5%

Source: U.S. Census Bureau, 2010 American Community Survey, 5-year estimate
 Notes: 1 AIAN = American Indian or Alaska Native. 2 NHPI = Native Hawaiian or other Pacific Islander. ▲ Denotes a MOE that is "Good" and has a 0%-20% Relative Reliability; ● Denotes a MOE that is "Fair" and has a 21%-50% Relative Reliability; ▼ Denotes a MOE that is "Poor" and has a 51%-100% Relative Reliability.

Table 27: Continued

Area	Below the Poverty Level	
	# Hispanic	% Hispanic
Illinois	▲346,829	8.2%
Champaign County	▲2,761	32.8%
Allerton village	▼0	0.0%
Bondville village	▼0	0.0%
Broadlands village	▼0	0.0%
Champaign city	▲1,089	30.7%
Fisher village	▼0	0.0%
Foosland village	▼0	0.0%
Gifford village	▼0	0.0%
Homer village	▼13	40.6%
Ivesdale village	▼0	0.0%
Longview village	▼0	0.0%
Ludlow village	▼0	0.0%
Mahomet village	▼0	0.0%
Ogden village	▼0	0.0%
Pesotum village	▼0	0.0%
Philo village	▼16	100.0%
Rantoul village	●216	20.8%
Royal village	▼0	0.0%
Sadorus village	▼0	0.0%
St. Joseph village	▼39	31.0%
Savoy village	▼10	2.8%
Sidney village	▼5	11.6%
Thomasboro village	▼0	0.0%
Tolono village	▼0	0.0%
Urbana city	●664	47.0%

Figure 20: Percent of Population Below the Poverty Level by Race



Source: U.S. Census Bureau, 2006-2010 American Community Survey, 5-year estimate

Notes: ▲ Denotes a MOE that is "Good" and has a 0%-20% Relative Reliability; ● Denotes a MOE that is "Fair" and has a 21%-50% Relative Reliability; ▼ Denotes a MOE that is "Poor" and has a 51%-100% Relative Reliability.

Students Receiving Free or Reduced Lunches

The number of students receiving free or reduced cost lunches often serves as a commonly accepted proxy for measuring children in poverty.

While the Champaign School District has experienced fluctuations in the number of students participating in the free and reduced cost lunch program, the Urbana School District has experienced regular increases in the number of students participating in the program.

Overall, school districts serving Champaign County have experienced an increase in the number of students participating in the program. The data represents the students participating in this benefit program. Additional eligible students may be enrolled but not participating because of perceived stigma, lack of understanding, or other factors; however, no data is available for these students.

Table 28: Students Receiving Free or Reduced Cost Lunches: 2004-2011

District/Year	Total Students	Free Lunches		Reduced Lunches	
		Number	Percent	Number	Percent
Champaign School District					
FY2004	9,068	3,052	33.7%	446	4.9%
FY2005	8,990	3,086	34.3%	431	4.8%
FY2006	9,160	3,398	37.1%	473	5.2%
FY2007	9,090	3,481	38.3%	500	5.5%
FY2008	8,938	3,619	40.5%	544	6.1%
FY2009	8,973	3,632	40.5%	615	6.9%
FY2010	8,889	4,347	48.9%	598	6.7%
FY2011	9,057	4,155	45.9%	586	6.5%
Percent Change 2004-2011		36.1%		31.4%	
Urbana School District					
FY2004	4,333	1,841	42.5%	214	4.9%
FY2005	4,220	1,866	44.2%	289	6.8%
FY2006	4,120	1,954	47.4%	321	7.8%
FY2007	4,096	2,124	51.9%	314	7.7%
FY2008	3,900	1,966	50.4%	351	9.0%
FY2009	3,916	2,122	54.2%	322	8.2%
FY2010	3,944	2,242	56.8%	279	7.1%
FY2011	4,038	2,332	57.6%	275	6.8%
Percent Change 2004-2011		26.7%		28.5%	
All Champaign County School Districts					
FY2004	23,515	7,030	29.9%	1,075	4.6%
FY2005	23,562	7,245	30.7%	1,201	5.1%
FY2006	24,968	7,702	30.8%	1,344	5.4%
FY2007	23,635	8,006	33.9%	1,378	5.8%
FY2008	23,194	8,044	34.7%	1,471	6.3%
FY2009	23,337	8,543	36.6%	1,586	6.8%
FY2010	23,322	9,643	41.3%	1,525	15.8%
FY2011	23,584	9,749	41.3%	1,400	6.0%
Percent Change 2004-2011		38.7%		30.2%	

Source: Illinois State Board of Education, Free and Reduced-Price Meal Eligibility Data. http://www.isbe.net/nutrition/htmls/eligibility_listings.htm - Last Accessed 1/30/2012

Farm Income & Expenses, and Personal Income by Type & Industry

Information for Table 29 and Table 30 was acquired from the U.S. Department of Labor Statistics, Bureau of Economic Analysis.

The tables present estimated data for 1990, 2000 and 2007-2009. All dollar estimates are not adjusted for inflation.

The estimates of earnings in Table 31 are based on the 2002 and 2007 North American Industry Classification System (NAICS).

Additional definitions, years, and categories can be accessed through the Bureau of Economic Analysis website at <http://www.bea.doc.gov/bea/regional/reis/>.

Table 29: Farm Income and Expenses in Champaign County: 1990, 2000, 2007-2009

Category	In Thousands of Dollars					% Change	% Change
	1990	2000	2007	2008	2009	1990-2000	2000-2009
Total Cash receipts from marketings (\$000)	183,255	149,955	305,648	364,698	347,353	-18.2%	131.6%
Cash receipts: livestock and products	13,401	7,156	13,177	15,546	13,217	-46.6%	84.7%
Cash receipts: crops	169,854	142,799	292,471	349,152	334,136	-15.9%	134.0%
Other Income	17,770	58,020	21,037	26,618	31,324	226.5%	-46.0%
Government Payments	11,916	51,023	14,199	14,357	12,015	328.2%	-76.5%
Imputed and miscellaneous received	5,854	6,997	6,838	12,261	19,309	19.5%	176.0%
Total production expenses	153,120	169,087	222,930	261,160	258,322	10.4%	52.8%
Feed purchases	2,884	2,177	3,089	3,575	3,025	-24.5%	39.0%
Livestock purchased	2,754	2,320	2,531	3,153	2,711	-15.8%	16.9%
Seed purchased	8,679	13,316	25,407	29,849	35,754	53.4%	168.5%
Fertilizer and lime (incl. Ag. Chem. '78-fwd.	25,917	37,972	54,151	67,389	64,621	46.5%	70.2%
Petroleum products purchased	5,933	6,174	12,399	15,906	13,450	4.1%	117.8%
Hired farm labor expenses ²	7,735	8,377	17,683	17,729	17,569	8.3%	109.7%
All other production expenses ³	99,218	98,751	107,670	123,559	121,192	-0.5%	22.7%
Total value of inventory change	3,680	954	-12,793	38,849	-4,670	-74.1%	-589.5%
Value of inventory change: livestock	0	-65	-915	-281	-249	--	283.1%
Value of inventory change: crops	3,680	101	-11,425	37,357	-4,532	-97.3%	-4587.1%
Value of inventory change: materials and supplies	0	918	-453	1,773	111	--	-87.9%
Derivation of Farm Labor and Proprietors' Income							
Total cash receipts and other income	201,025	207,975	326,685	391,316	378,677	3.5%	82.1%
less: Total production expenses	153,120	169,087	222,930	261,160	258,322	10.4%	52.8%
Realized net income	47,905	38,888	103,755	130,156	120,355	-18.8%	209.5%
plus: Value of inventory change	3,680	954	-12,793	38,849	-4,670	-74.1%	-589.5%
Total net income including corporate farms	51,585	39,842	90,962	169,005	115,685	-22.8%	190.4%
less: Net income of corporate farms	2,838	1,836	8,764	15,754	8,429	-35.3%	359.1%
plus: Statistical adjustment	(L)	(L)	0	(L)	(L)	--	--
Total net farm proprietors' income	48,746	38,007	82,198	153,250	107,255	-22.0%	182.2%
plus: Farm wages and prerequisites	4,378	4,468	12,342	13,238	12,881	2.1%	188.3%
plus: Farm other labor income	591	663	2,283	2,303	2,012	12.2%	203.5%
Total farm labor and proprietors' income	53,715	43,138	96,823	168,791	122,148	-19.7%	183.2%

Table 29: Continued

Source: U.S. Bureau of Economic Analysis, Regional Economic Information System

Notes: ¹ Consists of the value of home consumption and other farm related income components, such as machine hire and custom work and income from forest products (1978 to present); ² Consists of hired workers' cash pay and perquisites, employers' contributions for social security and medicare, and payments for contract labor, machine hire, and custom work; ³ Consists of repair and operation of machinery; depreciation, interest, rent and taxes; and other miscellaneous expenses including agricultural chemicals (1969-77).

All state and local area dollar estimates are in current dollars (not adjusted for inflation).

(L) Less than \$50,000, but the estimates for this item are included in the totals.

Table 30: Personal Income by Type in Champaign County: 2000 and 2007-2009

Category	In Thousands of Dollars				% Change 2000-2009
	2000	2007	2008	2009	
Income: Farm/Nonfarm					
Personal Income	4,676,086	6,141,096	6,530,542	6,545,202	40.0%
Nonfarm person income ¹	4,633,215	6,045,180	6,362,587	6,423,855	38.6%
Farm income ²	42,871	95,916	167,955	121,347	183.1%
Population (persons) ³	179,931	192,975	193,562	195,671	8.7%
Per capita personal income (dollars) ⁴	25,988	31,823	33,739	33,450	28.7%
Derivation of Personal Income					
Earnings by place of work	3,857,983	5,135,157	5,464,925	5,395,163	39.8%
less: Personal contrib. for social insurance ⁵	370,007	505,351	529,357	524,941	41.9%
plus: Adjustment for residence ⁶	-375,929	-480,860	-512,522	-503,127	33.8%
equals: Net earnings by place of residence	3,112,047	4,148,946	4,423,046	4,367,095	40.3%
plus: Dividends, interest, and rent ⁷	1,110,779	1,272,796	1,330,727	1,259,969	13.4%
plus: Transfer payments	453,260	719,354	776,769	918,138	102.6%
Components of Earnings					
Wage and salary disbursements	2,941,706	3,806,037	4,006,832	3,972,170	35.0%
Supplements to wages and salaries	635,194	957,988	1,037,849	1,061,652	67.1%
Proprietors' income ⁸	281,083	371,132	420,244	361,341	28.6%
Farm proprietors' income	38,007	82,198	153,250	107,255	182.2%
Non farm proprietors' income	243,076	288,934	266,994	254,086	4.5%

Source: U.S. Bureau of Economic Analysis, Regional Economic Information System, available online at: <http://www.bea.doc.gov/bea/regional/data.htm>.

Notes: ¹ Nonfarm personal income is total personal income less farm income; ² Farm income is farm earnings less farmer employer contributions for social insurance; ³ Census Bureau midyear population estimates. Estimates for 2000-2009 reflect county population estimates available as of April 2010. For more information, see the explanatory note at: <http://www.bea.gov/regional/docs/popnote.cfm>; ⁴ Per capita personal income is total personal income divided by total midyear population; ⁵ Contributions for government social insurance are included in earnings by type and industry, but they are excluded from personal income; ⁶ The adjustment for residence is the net inflow of the earnings of inter-area commuters. For the United States, it consists of adjustments for border workers and for certain temporary and migratory workers: Wage and salary disbursements to U.S. residents commuting or working temporarily outside U.S. borders less wage and salary disbursements to foreign residents commuting or working temporarily inside U.S. borders; ⁷ Rental income of persons includes the capital consumption adjustment; ⁸ Proprietor's income includes the inventory valuation adjustment and the capital consumption adjustment.

All state and local area dollar estimates are in current dollars (not adjusted for inflation).

Table 31: Earnings by Industry (thousands of dollars): 2004-2009

Industry	2004	2005	2006	2007	2008	2009	% Change 2005-2009
Farm earnings	94,935	42,136	60,808	96,823	168,791	122,148	28.7%
Nonfarm earnings	4,755,425	4,648,367	4,804,818	5,038,334	5,296,134	5,273,015	13.4%
Private earnings	2,915,714	2,980,130	3,083,320	3,210,621	3,343,564	3,253,941	9.2%
Forestry, fishing, and related activities	14,713	15,968	16,736	(D)	(D)	(D)	--
Mining	1,791	2,781	2,735	(D)	(D)	(D)	--
Construction	254,746	268,321	255,892	254,189	281,133	225,991	-15.8%
Manufacturing	481,072	479,777	472,452	487,389	461,550	419,516	-12.6%
Durable Goods	257,634	245,606	236,147	233,784	198,742	175,920	-28.4%
Non-Durable Goods	223,438	234,171	236,305	253,605	262,808	243,596	4.0%
Information	119,478	115,078	121,705	129,863	134,931	131,055	13.9%
Utilities	(D)	18,594	20,433	19,857	22,154	23,807	28.0%
Transportation and warehousing	(D)	143,620	137,194	141,117	145,265	144,562	0.7%
Wholesale Trade	139,342	151,016	166,336	175,557	192,665	190,305	26.0%
Retail Trade	278,081	258,564	272,337	290,560	294,697	282,031	9.1%
Finance and Insurance	139,687	148,722	150,460	147,281	146,852	148,572	-0.1%
Real estate and rental and leasing	78,141	88,484	96,144	81,646	86,589	91,261	3.1%
Professional, scientific and technical services	226,413	252,814	282,024	302,861	343,833	347,402	37.4%
Administrative and waste management services	80,755	89,259	98,714	106,500	118,866	109,076	22.2%
Educational Services	19,533	18,487	19,580	19,753	19,532	19,363	4.7%
Health care and social assistance	553,322	579,278	625,175	669,064	702,630	733,286	26.6%
Arts, entertainment and recreation	18,169	20,733	22,252	23,005	23,752	22,684	9.4%
Accommodation and food services	148,360	152,222	146,308	159,439	160,428	156,676	2.9%
Other services, except public administration	140,199	146,853	149,162	157,925	163,017	162,589	10.7%
Government	1,000,184	1,321,946	1,668,237	1,827,713	1,952,570	2,019,074	52.7%
Federal, civilian	108,937	97,645	114,183	119,875	121,883	124,089	27.1%
Military	140,370	10,046	19,077	20,289	20,588	24,421	143.1%
State and local	750,877	1,214,255	1,534,977	1,687,549	1,810,099	1,870,564	54.1%

Source: U.S. Bureau of Economic Analysis, Regional Economic Information System, available online at: <http://www.bea.doc.gov/regiona/ldata.htm>.
 Notes: The estimates for 1988-2000 are based on the 1987 Standard Industrial Classification (SIC); The estimates of earnings for 2001-2006 are based on the 2002 North American Industry Classification System (NAICS). The estimates for 2007 forward are based on the 2007 NAICS. (D) Not shown to avoid disclosure of confidential information, but the estimates for this item are included in the totals; (NA) Data not available for this year.