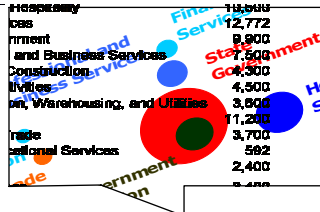
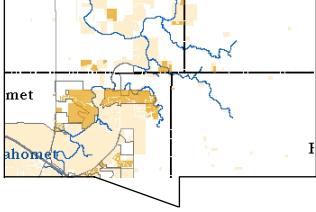


big.small. all.
champaign county.

our future. here.



champaign county
today and tomorrow

selected trends and conditions

champaign county. today and tomorrow.

selected trends and conditions.

prepared by
Champaign County Regional Planning Commission
1776 East Washington Street
Urbana, IL 61803

phone: 217.328.3313
fax: 217.328.2426

www.ccrpc.org
www.bigsmallall.cc

Champaign County Regional Planning Commission Staff
Sara Javoronok, Planner Analyst
Tim Glass, Planning Intern
Frank DiNovo, Director, Planning & Community Development

August 2006



CHAMPAIGN COUNTY
REGIONAL PLANNING COMMISSION

champaign county. today and tomorrow.

selected trends and conditions.

Table of Contents

Population	4
Economy	6
Agriculture	12
Land Development	13
Poverty, Children & Families	17
Education	19
Housing Affordability	20
Crime	21
Property Tax	22
Sales Tax	23
Parks & Preserves	24
Transportation	25

This document outlines statistical data on salient topics raised in the big.small.all. process. It is by no means complete or comprehensive. Statistics are presented where data was readily available and for topics that could be addressed effectively with available resources.

Further statistical information is available in the 2004 *Champaign County Statistical Abstract* available on the Champaign County Regional Planning Commission's website at <http://www.ccrpc.org/planning/stats/statisticalinfo.php>

The CCRPC can also address specific inquiries. Please contact Sara Javoronok at 217.328.3313 for additional information.

Population

Growth Driven by Natural Increase, Diversity Increasing

Champaign County's population has grown at a rate lower than the expected natural increase for much of the past 30 years. Natural increase is the net difference between births and deaths; the difference between the natural increase and the actual increase is the net migration, or total number of people either entering or leaving the county. The bar chart at right shows that there has only been modest net in-migration to Champaign County since 1995.

There are two different population projections for Champaign County by 2030, one by the private firm Woods & Poole and one by the Illinois Department of Commerce and Economic Opportunity. While both show an overall increase in the Champaign County population by 2030, they present a range of 12,000 people between the two projections. The DCEO projection expects the population to grow by 29,298 people from 2005 to a total of 216,958, while the W&P projections expects the county to add 16,880 people for a total of 204,540. The trends are projected in the graph to the right.

Figure 1: Births, Deaths, and Net Migration by 5 Year Period, 1970-2004, Champaign County, IL

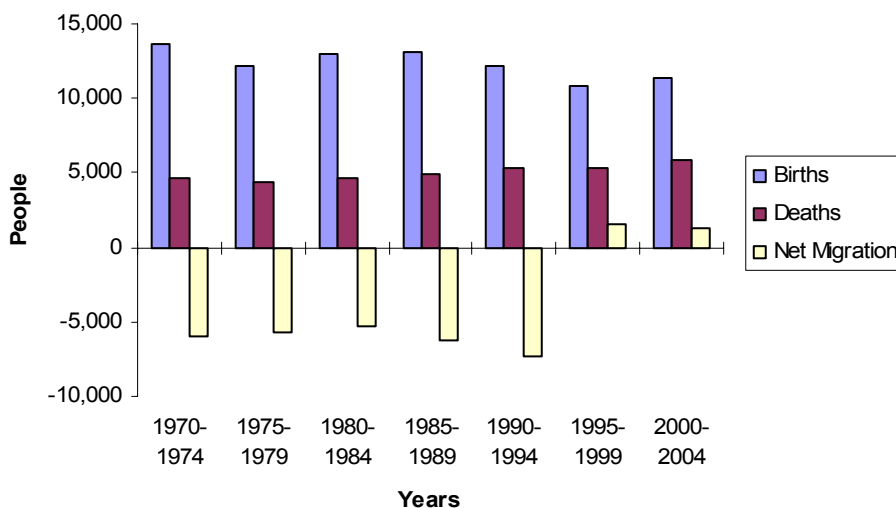
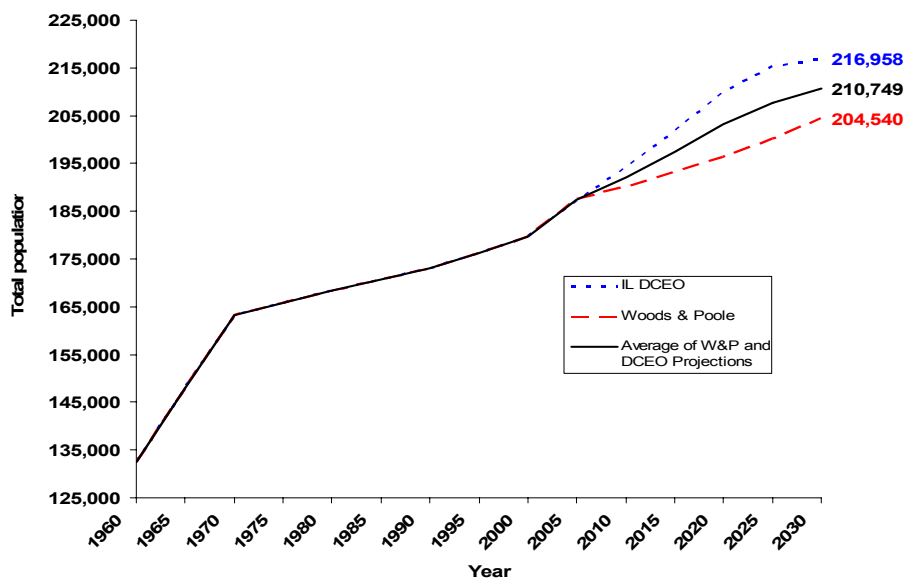


Figure 2: Total population, Champaign County, 1960-2030



Champaign County's White population has declined since 1970. While the DCEO projection expects that trend to reverse, both projections show a decline in the proportion of the county population that is White, and an increase in the proportions that are Black, Asian, and Other. The results are in the pie charts below.

Figure 3: Total White Population, Champaign County, 1970-2030

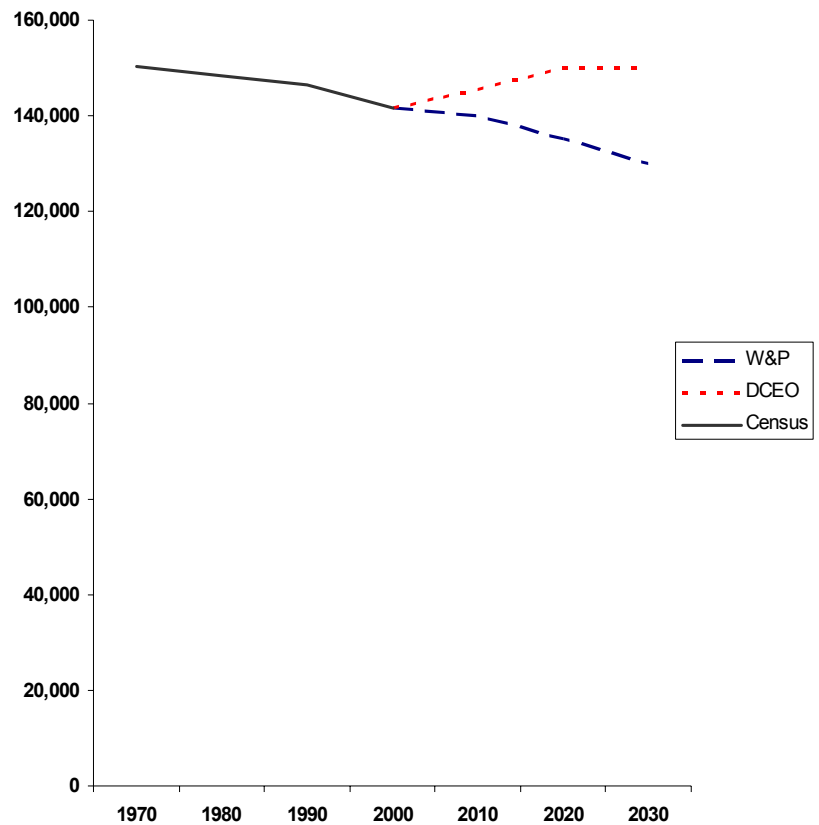


Figure 4: Population by Race, Champaign County, Census 2000

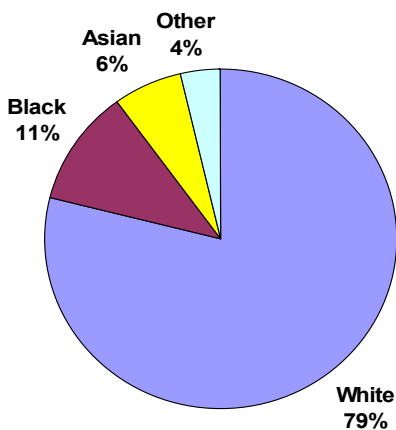


Figure 5: Population by Race, Champaign County, 2030 Projection by Woods & Poole

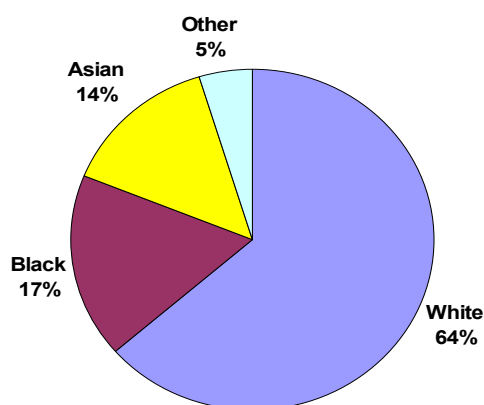
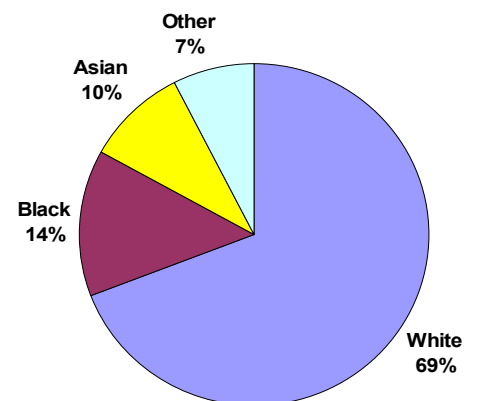


Figure 6: Population by Race, Champaign County, 2030 projection by the Illinois Department of Commerce and Economic Opportunity



Economy

Public Employment Remains the Driving Force of Economy, Private Sector Strengthens

Champaign County's biggest employer is the University of Illinois, comprising much of the 22 percent share of local employment held by jobs in state government. Over the past 30 years, however, the private sector has grown

substantially in relative size, including gains for Manufacturing, Agricultural Services, and Retail trade when compared to national trends.

Figure 7: Change in employment by industry, Champaign County, 1970-2000

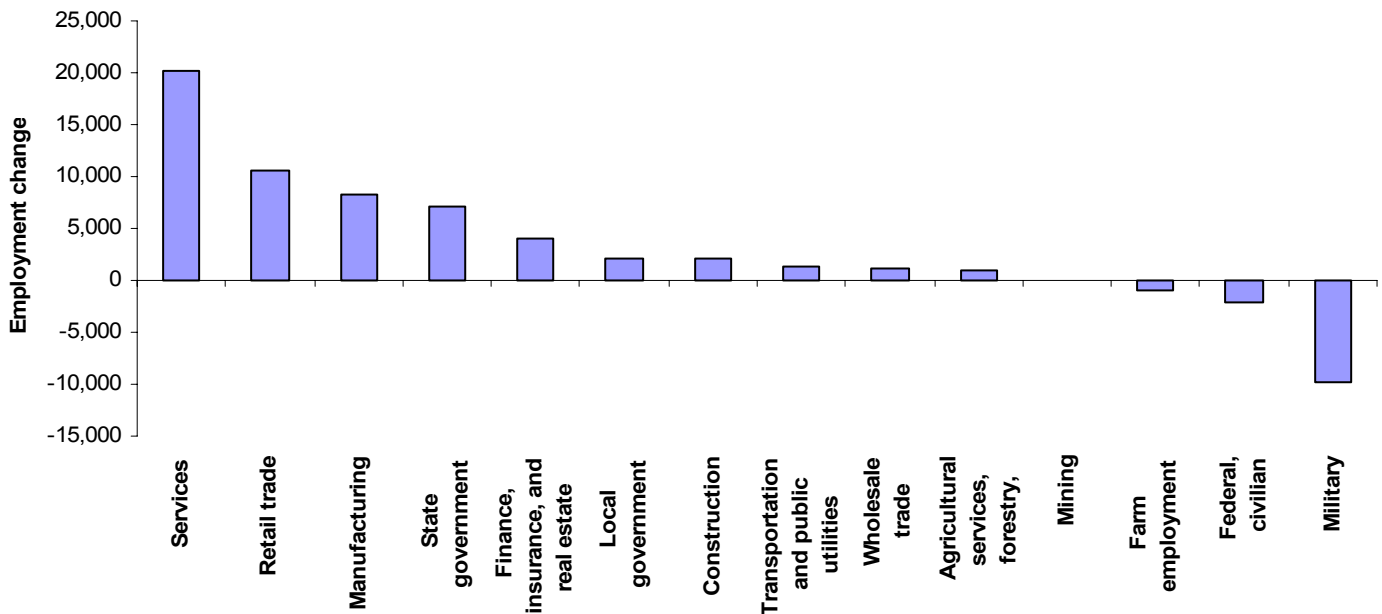
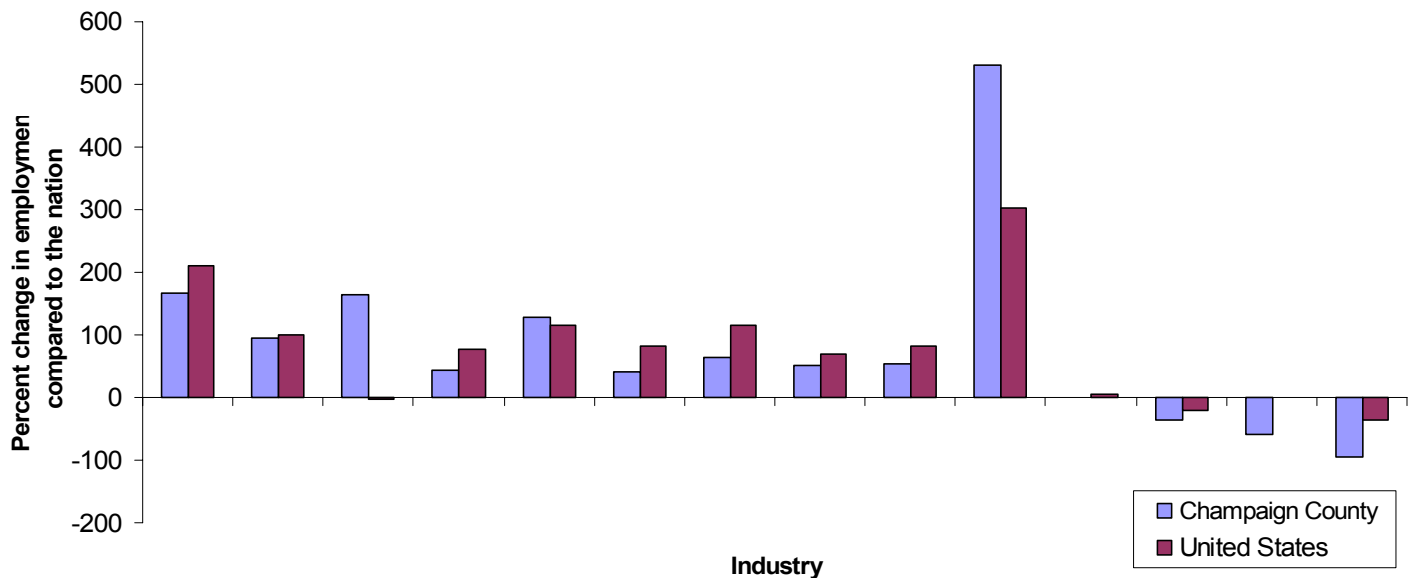


Figure 8: Champaign County and U.S. employment by Industry, 2004



Local Arts Contributions

The arts are not detailed individually in the other statistics and are highlighted with this information from the Illinois Arts Alliance

- The organizations surveyed employ 1,400 people—70 percent of whom live in the local community
- There is strong volunteer participation in arts organizations, with 1,675 people volunteering, nearly all from the local community.
- The total annual audience for the organizations reporting is an estimated 634,000.
- Just over half of the audience lives locally—within five miles of the organization—while the other half are comprised of people coming from a greater distance.
- Half of the organizations made improvements to their property in the past year—with a total value of over \$2.3 million
- Arts groups spent \$1.5 million last year on basic services such as printing and catering
- Arts organizations provide a variety of services to the community. Contributions to education and to local community and civic organizations are particularly noteworthy.

Source: Working Together 3, Illinois Arts Alliance, 2002

Annual average employment by sector and share, 2004

Champaign-Urbana, IL MSA: Champaign, Ford, and Piatt counties

Sector	2004	Share
Total Employment	114,274	1.00
Total Farm	2,774	0.02
Total Nonfarm	111,500	0.98
Total Private	74,500	0.65
Goods Producing	15,600	0.14
Mining and Construction	4,300	0.04
Manufacturing	11,300	0.10
Durable Goods	6,300	0.06
Non-Durable Goods	5,000	0.04
Service-Providing	95,900	0.84
Trade, Transportation, and Utilities	18,500	0.16
Wholesale Trade	3,700	0.03
Retail Trade	11,200	0.10
Transportation, Warehousing, and Utilities	3,600	0.03
Information	2,400	0.02
Financial Activities	4,500	0.04
Professional and Business Services	7,500	0.07
Educational and Health Services	12,100	0.11
Leisure and Hospitality	10,600	0.09
Other Services	3,400	0.03
Government	37,000	0.32
Federal Government	1,400	0.01
State Government	25,700	0.22
Local Government	9,900	0.09
Local Government, Educational Services	5,500	0.05

Source: Illinois Department of Employment Security, Industry Employment Estimates, except for Farm Employment. Farm Employment from BEA Local Area Information Statistics, CA25 - Employment by Industry. Totals may not sum due to rounding.

Employment by industry, specialization, and change, 1970-2000

Champaign County, IL

Industry	2000 Employment			Location Quotient		
	Number	Share	US Share	1970	2000	Change
State government	23,580	0.19	0.03	6.85	6.43	-0.42
Retail trade	21,699	0.18	0.16	0.95	1.08	0.13
Manufacturing	13,311	0.11	0.11	0.30	0.94	0.64
Services	32,512	0.26	0.32	0.83	0.83	-0.01
Local government	7,400	0.06	0.08	0.85	0.77	-0.08
Agricultural services, forestry, fishing and other	1,197	0.01	0.01	0.42	0.76	0.34
Construction	5,322	0.04	0.06	0.85	0.76	-0.09
Farm employment	1,727	0.01	0.02	0.80	0.75	-0.05
Finance, insurance, and real estate	7,205	0.06	0.08	0.60	0.74	0.14
Transportation and public utilities	4,200	0.03	0.05	0.67	0.69	0.02
Federal, civilian	1,462	0.01	0.02	1.45	0.68	-0.77
Wholesale trade	3,416	0.03	0.05	0.62	0.61	-0.01
Military	442	0.00	0.01	3.71	0.29	-3.42
Mining	88	0.00	0.00	0.14	0.15	0.02
Total	123,561	1.00	1.00			

Source: US Department of Commerce, Bureau of Economic Analysis, CA25 - Employment by Industry.

Economy

Projected Job Growth

According to state estimates the Champaign County economy stands to add nearly 10,000 jobs over the next 10 years. The State Government sector leads with 2,416 new jobs, at an annual growth rate of 0.94 percent, while the faster growing Leisure and Hospitality sector will add 1,919 jobs at a 1.81 percent annual growth rate. Other sectors projected to grow at rates higher than 1 percent annually include Health Services, Mining and Construction, and Private Educational Services. The only sector projected to lose jobs over the next 10 years is the Farm sector, including farm proprietors and workers. The highest-paying sector in Champaign County is the Federal Government, at an average per-job salary of \$98,106 annually.

Location quotients (LQ) are a ratio of each section's share of employment to its share of the national economy. LQs over 1.0 indicate areas of relative specialization. Due to the size of the

University of Illinois, Champaign County shows significant specialization in State Government with a LQ of 6.06. Other areas of specialization include Retail Trade and Private Educational Services.

Projected employment growth rates to 2014 by sector Champaign-Urbana, IL MSA

Sector	2004 2004 Jobs	Total Earnings (in thousands)	2004 Earnings per Job	2004 Net Jobs LQ	2004 Net Income LQ	% Average Annual Change
State Government	25,700	\$1,127,890	\$43,887	5.79	6.06	0.94
Leisure and Hospitality	10,600	\$159,687	\$15,065	0.04	-0.15	1.81
Health Services	12,772	\$520,781	\$40,775	0.10	0.14	1.21
Local Government	9,900	\$417,165	\$42,138	-0.09	0.00	0.96
Professional and Business Services	7,500	\$390,555	\$52,074	-0.52	-0.46	0.96
Mining and Construction	4,300	\$283,191	\$65,858	-0.48	-0.23	1.03
Financial Activities	4,500	\$251,901	\$55,978	-0.54	-0.50	0.97
Transportation, Warehousing, and Utilities	3,600	\$311,592	\$86,553	-0.12	0.46	0.85
Retail Trade	11,200	\$289,481	\$25,847	-0.13	-0.11	0.25
Wholesale Trade	3,700	\$173,819	\$46,978	-0.13	-0.32	0.53
Private Educational Services	592	\$18,262	\$30,848	2.32	-0.72	1.00
Information	2,400	\$122,467	\$51,028	-0.01	-0.33	0.50
Other Services	3,400	\$124,125	\$36,507	-0.49	-0.15	0.22
Manufacturing	11,300	\$543,535	\$48,100	0.11	-0.14	0.05
Federal Government	1,400	\$137,349	\$98,106	-0.58	-0.41	0.30
Total Farm	2,774	\$33,619*	\$12,119	0.36	0.08	-0.53
Total	115,638	\$4,905,419				

Source: 2004 MSA Jobs from Illinois Department of Employment Security OES estimates, jobs projection growth rates from Illinois Department of Commerce and Economic Development, earnings data from the US Bureau of Economic Statistics, CA05N - Personal income and detailed earnings by industry

*Farm earnings estimated using 3 year average (2002-2004) in 2004 dollars including farm-related subsidies and transfer payments, source: US BEA, CA45 - Farm income, labor and proprietors income

Occupational Wages Track National Averages

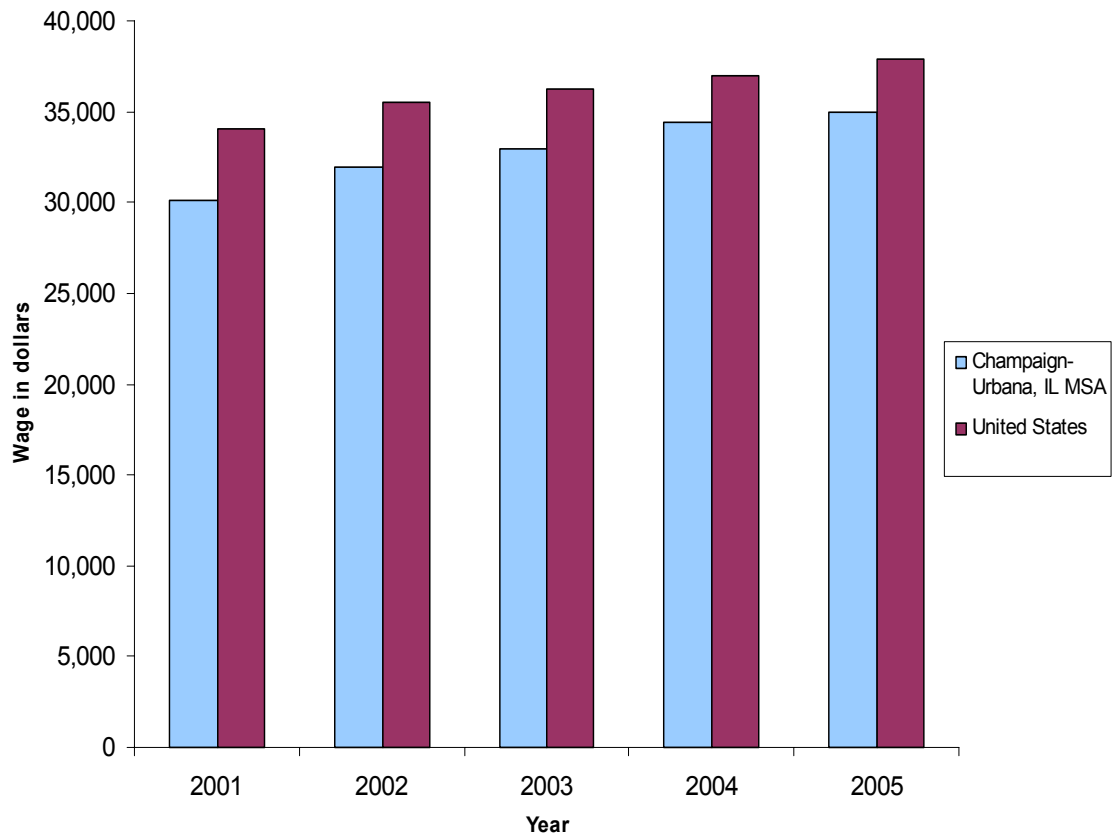
While slightly below the national average, growth rate for occupational wages in Champaign County has moved towards catching up over the past five years. For 2005 the average annual wage in Champaign County was \$34,980, or \$2,890 below the national average, and represents an increase of \$4,810 or 16.3 percent over 2001. In the same time, the average U.S. wage grew 11.1 percent

The highest wage-earning occupation in Champaign County is in Legal, followed by Management and Architecture and Engineering. The category with the most employees is Office and Administrative Support, which has an annual wage of \$27,300, or 78 percent of the mean wage.

Annual Income

	2001	2002	2003	2004	2005
Champaign-Urbana, IL MSA	30,070	31,990	32,940	34,460	34,980
United States	34,020	35,560	36,210	37,020	37,870

Figure 9: Average annual wage, all occupations, 2001-2005, Champaign County, IL and United States



Projected Change	Projected 2014 Jobs
2,416	28,116
1,919	12,519
1,545	14,317
950	10,850
720	8,220
443	4,743
437	4,937
306	3,906
280	11,480
196	3,896
59	651
120	2,520
75	3,475
57	11,357
42	1,442
-147	2,627
9,417	125,055

Economic Opportunity. 2004 earn-

in income and expenses: total farm

Economy

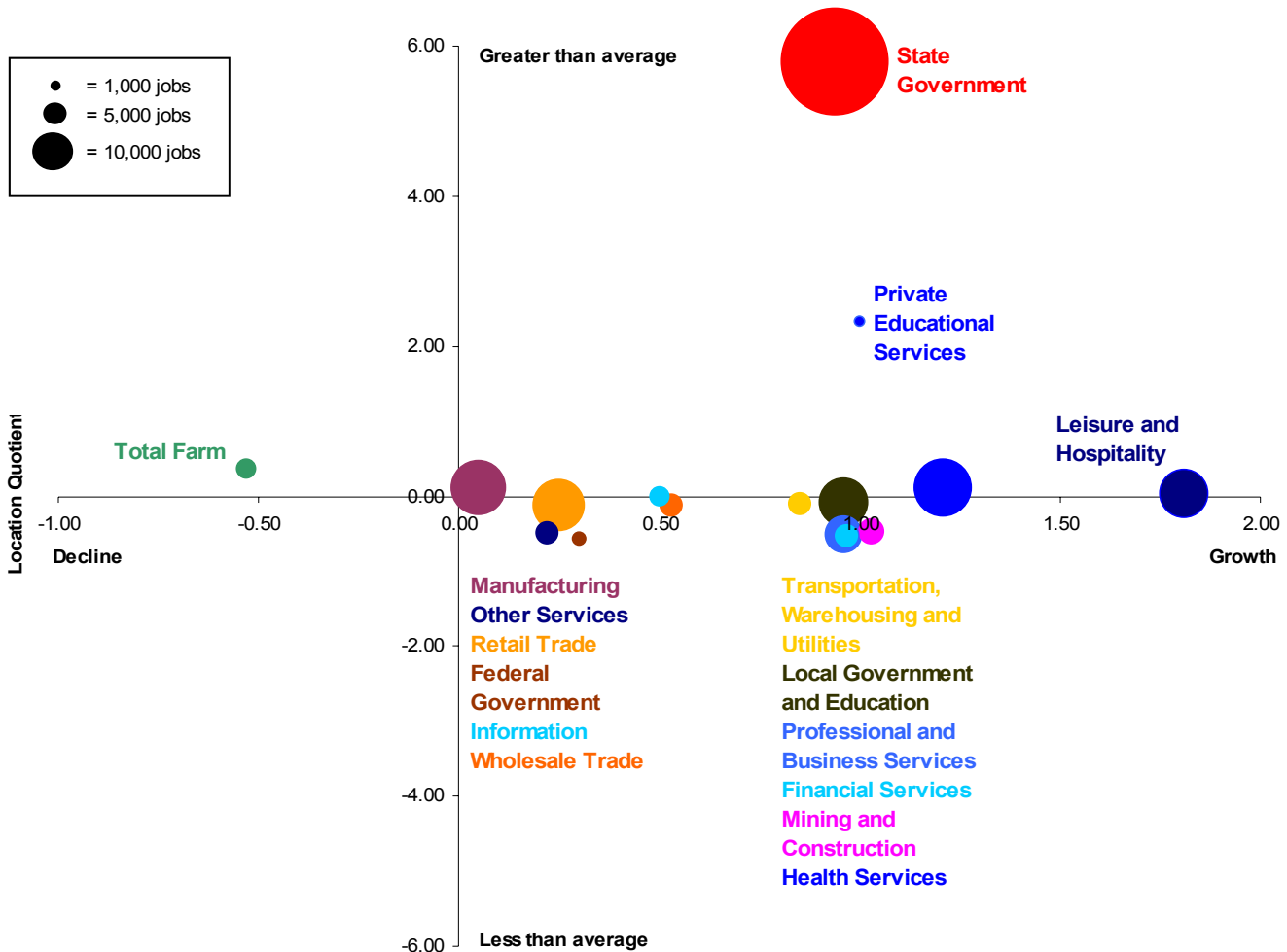
Champaign-Urbana MSA employment growth 2004-2014

The Illinois Office of Commerce and Economic Opportunity creates county-by-county projections for job growth in the major sectors of the local economy. For Champaign County, these projections are shown in the first table in this section as well as this scatter plot. The vertical axis represents the location quotient, which measures the degree of specialization for the Champaign County economy in a given sector compared to the U.S. The horizontal axis shows the projected annual job growth rate, and the size of

the dot represents the current number of jobs in that sector.

State Government, as the largest employer, represents the largest dot, and is projected to grow at a rate of 0.94 percent, adding 2,416 jobs by 2014. The fastest growing sector is Leisure and Hospitality, at a rate of 1.81 percent a year for a total of 1,919 jobs. The only sector anticipated to decline in size is Farm employment, losing 0.53 percent annually or 147 jobs over the next decade.

Figure 10: Champaign-Urbana MSA employment, location quotient, and projected average annual growth rate, 2004-2014

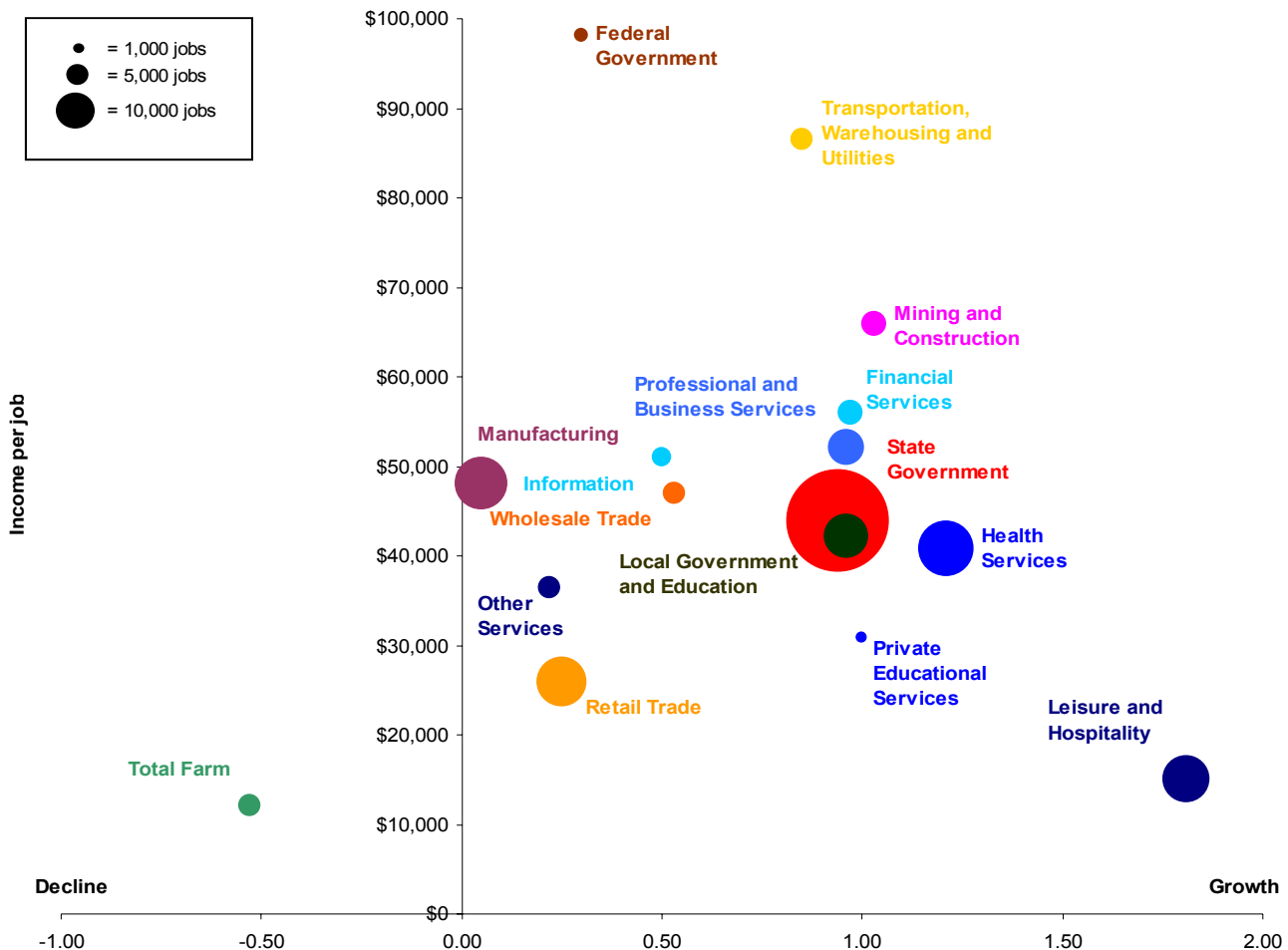


Source: Illinois Department of Commerce and Economic Opportunity, Bureau of Economic Analysis

Champaign-Urbana MSA wage and industry growth 2004-2014

This scatter plot shows the sectors relative to their size, projected growth, and average income per job. The highest paying sector in Champaign County, Federal Government, is projected to grow at a rate of 0.30 percent for the next ten years adding just 42 jobs. The highest growing sector, Leisure and Hospitality, is also the second lowest paying, at only \$15,065 in average income per job. The farm sector has the lowest average income per job, at \$12,119. The farm average was taken over three years.

Figure 11: Champaign-Urbana MSA employment by industry, average income per job and projected average annual industry growth rate, 2004-2014



Source: Illinois Department of Commerce and Economic Opportunity, Bureau of Economic Analysis

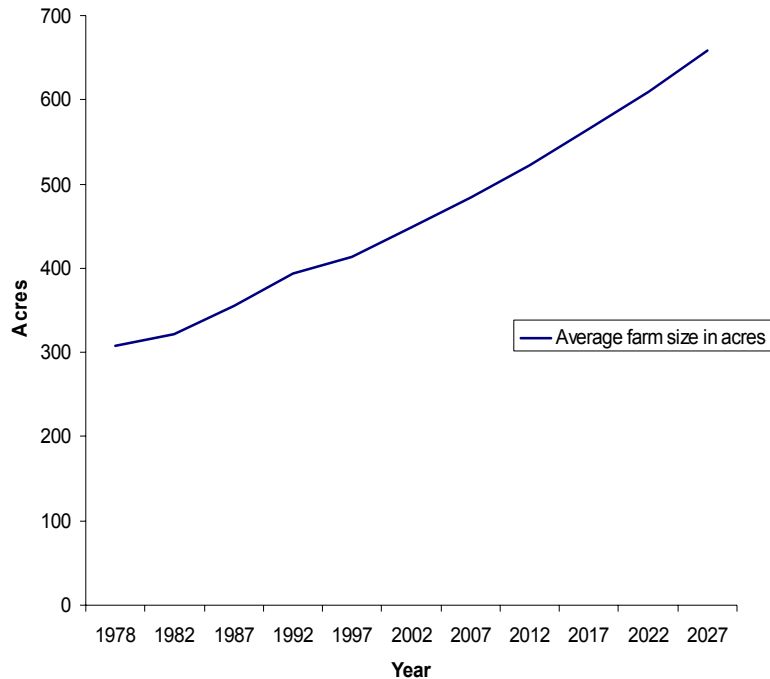
Agriculture

Farm Size Grows

Technological and economic forces continue to transform agriculture. The average farm size in Champaign County continues to grow fairly steadily. Farm size has grown 141 acres from 1978 to 2002, or about 8 percent per five year survey period for the USDA's Census of Agriculture. If these trends continue to 2028, the average farm size will be 659 acres, or slightly more than double what it was 50 years prior, and the total number of farms will fall to 848.

About 90% of this decline is due to the increase in farm size with farmland conversion accounting for about 10%. Using the land conversion numbers from the Land Development section, about 18,000 acres of farmland will be converted to non-agricultural uses by 2030, with about 559,000 acres of farmland remaining.

Figure 12: Average farm size, 1978-2027, Champaign County, IL



Average farm size and change, 1978-2027

Champaign County, IL

Year	Average farm size in acres	% Change
1978	308	
1982	321	0.04
1987	356	0.11
1992	394	0.11
1997	414	0.05
2002	449	0.08
2007	484	0.08
2012	523	0.08
2017	565	0.08
2022	610	0.08
2027	659	0.08

Source: USDA Census of Agriculture, 1978-2002; 2007-2027 projected based on average 5 year change

Increased Land Conversion

If current trends continue, land conversion is projected to increase in the next 25 years. 9,575 acres of land were converted to for development from 1988-2005, an average of 563 acres per year, across all uses. In that period, the county's population grew by 13,169 people, resulting in a land conversion rate of .73 acres/person added. The new uses included 4,310 acres of residential land, 283 acres for industrial purposes and 1,150 acres for commercial use. The total also includes land still assessed as agriculture and land assessed as open space, as well as tax exempt land controlled by a non-profit or government organization.

This was measured by comparing aerial photographs in conjunction with parcel data from the Champaign County GIS Consortium. The basic criteria to determine whether or not land was converted to another use other than commercial agriculture was to consider (1) whether the soil had been disturbed such that its natural qualities were destroyed or so cultivation on that parcel was no longer possible; and (2) whether the ownership of the parcel changed so that future use of the site for farming was impossible, such as a park. Parcels that had been altered were selected and matched to assessment categories to provide a rough picture of the land use breakdown. A map of the converted land appears on the next page.

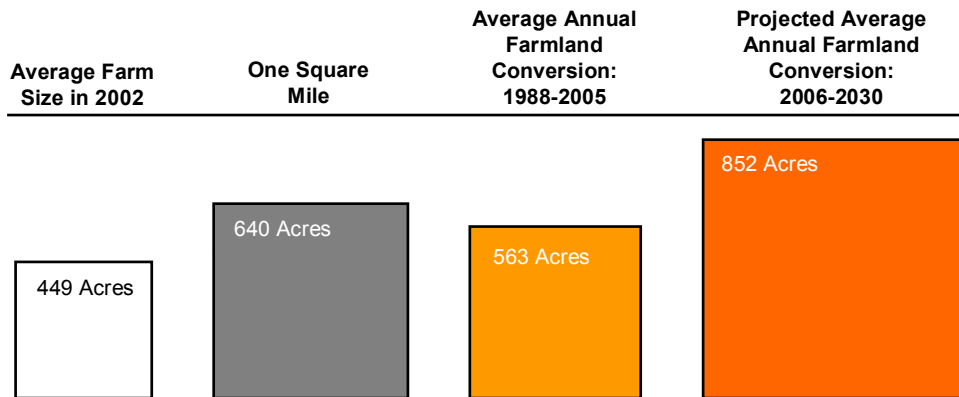
Converted agricultural land, 1988-2005

Champaign County, IL

Assessment category	Parcels	Acres
Residential	8,481	4,310
Developer held	671	313
Single family rental	2,038	1,036
Owner/occupied single family	5,523	2,701
Duplex rental	2	1
Owner/occupied duplex	0	0
Apartment - 3 to 7 units	5	5
Apartment 8 or more units	36	214
Group home/fraternity/sorority	0	0
Mobile home park	0	0
Condominium rental	65	10
Owner/occupied condominium	141	30
Industrial	50	283
Commercial	348	1,150
Communications/utilities	4	8
Hotel or motel	6	10
Exempt from taxation (parks, schools, churches, U of I, etc.)	94	1,006
Open space valuation (privately owned)	169	699
Agricultural use	67	1,139
Estimated street right of way	N/A	970
Totals:	9,219	9,575

Source: Aerial photo interpretation, Champaign County GIS, June 2006, Champaign County Supervisor of Assessments

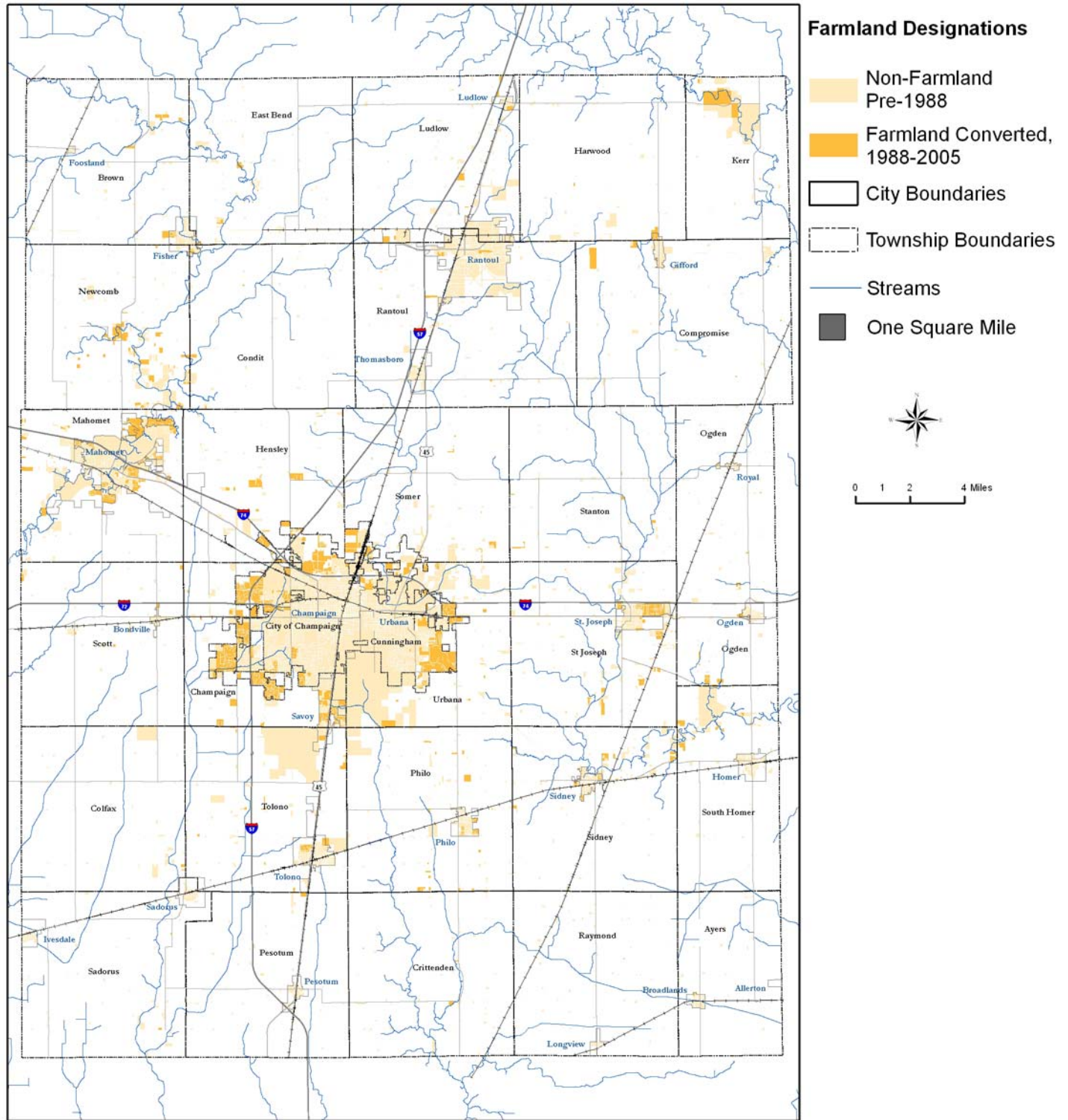
Farmland conversion rates, 1988-2005 and 2006-2030 (est.)



Sources: Fam size data from the 2002 USDA Census of Agriculture, http://www.nass.usda.gov/Census_of_Agriculture/index.asp. Conversion rates from aerial photo interpretation, Champaign County GIS, June 2006

Land Development

Non-farmland, pre-1988 and Farmland Converted, 1988-2005



Farmland conversion varies greatly by township

The amount of farmland converted varies greatly by townships, as townships closer to the county’s major urban centers generally experienced higher rates of conversion. The townships were analyzed using their 2005 boundaries, with Cunningham Township coexistent with the City of Urbana and the City of Champaign Townships sharing boundaries with the City of Champaign, including all annexations.

Most land converted at the urban fringe is included in the city township totals. Four townships had at least 500 acres converted from 1988-2005, including City of Champaign, Cunningham, Mahomet, and Champaign. Townships with under 10 acres converted include Ayers, Raymond, and Sadorus.

Single family residential lot size a significant determinant of farmland conversion rates

Of the 4,310 acres of farmland converted into residential uses since 1988, 3,737 of those acres are now single family homes. Most of the homes are located on smaller lots in urban areas with sanitary sewers. Single family parcels over 30,000 square feet (the county minimum for septic systems can be taken to represent rural development. As the tables on the next page shows, the parcels that are over 30,000 square feet comprise just 8 percent of new single family dwellings but are responsible for 46.6 percent of land converted for single family development and 21 percent of all land converted.

Converted farmland by township, 1988-2005

Champaign County, IL

Township	Parcels	Converted acres
Ayers	15	6
Brown	80	151
Champaign	1,672	879
City of Champaign	3,160	2,033
Colfax	6	17
Compromise	11	285
Condit	26	37
Crittenden	8	29
Cunningham	1,265	1,292
East Bend	8	52
Harwood	50	71
Hensley	68	197
Kerr	4	439
Ludlow	37	129
Mahomet	1,153	935
Newcomb	90	425
Ogden	73	118
Pesotum	2	22
Philo	139	190
Rantoul	68	89
Raymond	2	3
Sadorus	2	8
Scott	26	59
Sidney	105	155
Somer	38	130
South Homer	26	94
Stanton	24	54
St. Joseph	730	404
Tolono	223	201
Urbana	87	189

Source: Aerial photo interpretation, Champaign County GIS, June 2006

Land Development

New single-family residential by parcel size, 1988-2005

Champaign County, IL

Parcel Size	Greater than 30,000 Sq. Ft.	30,000 Sq. Ft. or less
Number of parcels	679	6,868
Percentage of total residential parcels	8.0	81.0
Percentage of total parcels	7.4	74.5
Acres	2,009	1,719
Percentage of total residential acreage	46.6	39.9
Percentage of total acreage	21.0	18.0

Source: Aerial photo interpretation and assessment category data, Champaign County, June 2006

New single-family residential on lots greater than 30,000 square feet, by township, 1988-2005

Champaign County, IL

Township	Residential parcels 30,000 sq. ft. or larger	Acres	Percentage of total acreage converted
Newcomb	76	364	85.6
Mahomet	92	226	24.2
Hensley	57	160	81.2
St. Joseph	40	130	32.2
Champaign	58	117	13.3
Sidney	26	116	74.8
Ogden	51	109	92.4
Philo	36	93	48.9
South Homer	20	82	87.2
Tolono	37	78	38.8
City of Champaign	25	65	3.2
Scott	17	54	91.5
Ludlow	10	53	41.1
Stanton	23	50	92.6
East Bend	7	46	88.5
Somer	23	44	33.8
Brown	14	42	27.8
Condit	10	31	83.8
Crittenden	8	29	100.0
Rantoul	11	26	29.2
Harwood	5	25	35.2
Urbana	11	17	9.0
Cunningham	7	17	1.3
Colfax	4	10	58.8
Kerr	2	10	2.3
Sadorus	2	8	100.0
Compromise	6	8	2.8
Raymond	2	3	100.0
Pesotum	1	1	4.5
Ayers	0	0	0.0

Source: Aerial photo interpretation and assessment category data, Champaign County, June 2006

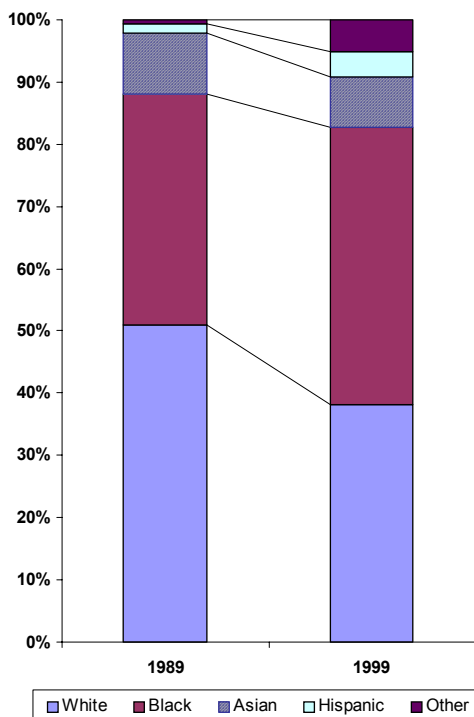
Poverty Increases for Female Headed Families with Children

The total number of families with children who were living in poverty decreased from 1990 to 2000. The number and percentage of married couples living in poverty decreased. However, the number of female householders increased from 58.6 percent to 67.4 percent.

Among families with children living in poverty, blacks comprise 44.6 percent. 38.2 percent are white families. Nearly 25 percent are white women, and 37 percent are black women.

The 2000 census categorized race and ethnicity differently in 2000 than in 1990. Hispanic is an ethnicity, not a race. The 2000 census also included racial categories for ‘Some other race alone’ and ‘Two or more races.’ The 1990 census had a single category entitled ‘Other race.’

Figure 15: Champaign County Families Living in Poverty with Children



	1989		1999	
	Number	Percent of Total	Number	Percent of Total
Total	2,519		2,153	
Married Couple	865	34.3%	611	28.4%
Male Householder	179	7.1%	91	4.2%
Female Householder	1,475	58.6%	1,451	67.4%
White				
Married Couple	551	21.9%	264	12.3%
Male Householder	79	3.1%	29	1.3%
Female Householder	656	26.0%	530	24.6%
Total	1,286	51.1%	823	38.2%
Black				
Married Couple	110	4.4%	106	4.9%
Male Householder	58	2.3%	58	2.7%
Female Householder	767	30.4%	796	37.0%
Total	935	37.1%	960	44.6%
Asian				
Married Couple	204	8.1%	168	7.8%
Male Householder	12	0.5%	4	0.2%
Female Householder	31	1.2%	0	0.0%
Total	247	9.8%	172	8.0%
Hispanic				
Married Couple	0	0.0%	44	2.0%
Male Householder	15	0.6%	0	0.0%
Female Householder	21	0.8%	42	2.0%
Total	36	1.4%	86	4.0%
Other				
Married Couple	0	0.0%	29	1.3%
Male Householder	15	0.6%	0	0.0%
Female Householder	0	0.0%	83	3.9%
Total	15	0.6%	112	5.2%

Source: U.S. Census

The 1990 Census category for Asians included Pacific Islander

Hispanic is not a racial category. It is an ethnic category based on cultural identities. It was categorized differently in 2000 than in 1990.

The Other category in 2000 includes American Indian and Alaska Native, Native Hawaiian and Pacific Islander, Some other race alone, and Two or more races. In 1990 the Census had an ‘Other Race’ category. There was not a value for American Indian, Eskimo, and Aleut

Poverty, Children & Families

Poverty Declines More for Some than Others

The total number of families with children who are living in poverty in Champaign County is decreasing.

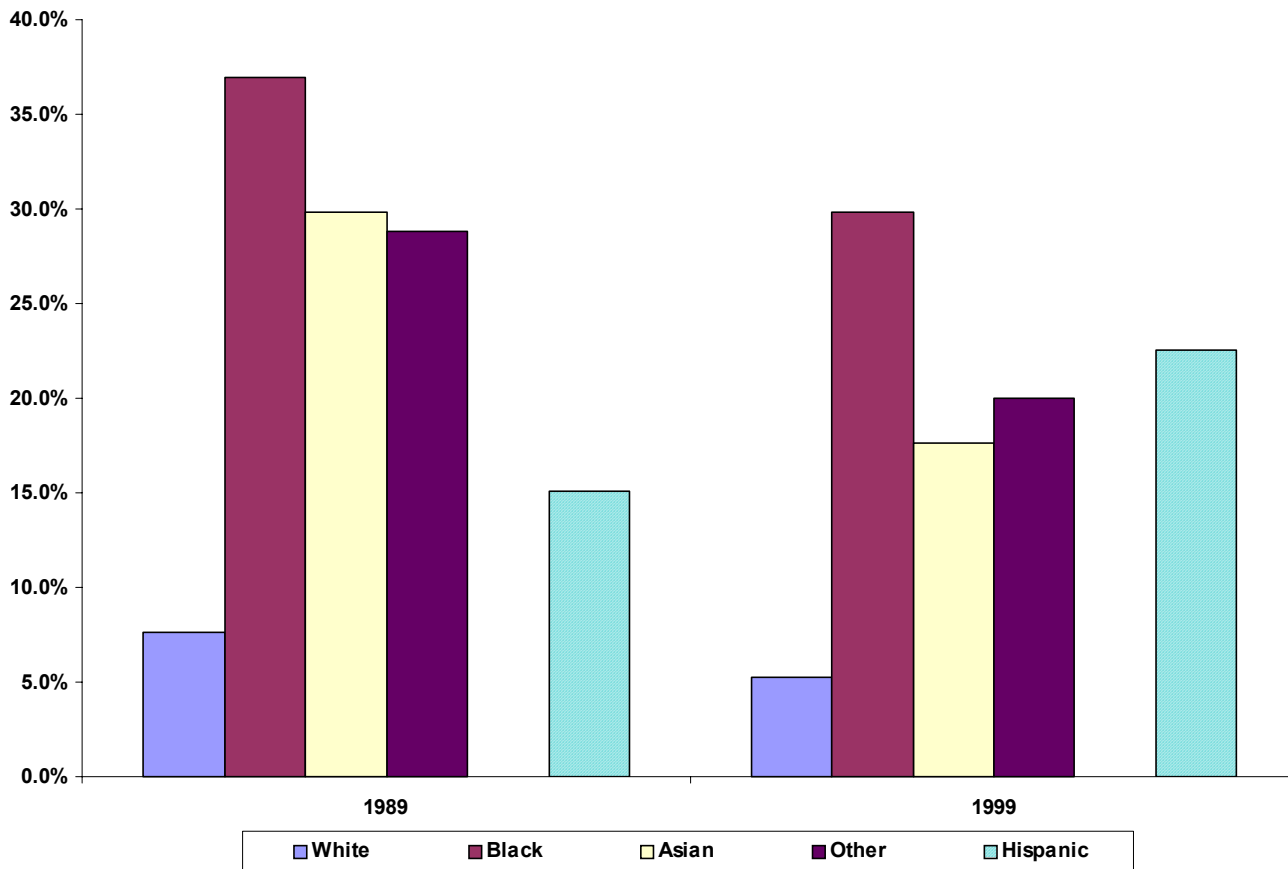
Family poverty declined dramatically for Asians and Other (a multiplier) race families. Poverty declined less for Black families and increased substantially for Hispanic families.

Poverty Status for Champaign County Families with Children

	1989			1999		
	Number	Total	Percent	Number	Total	Percent
All Families	2,519	20,472	12.3%	2,153	20,793	10.4%
White	1,286	16,822	7.6%	823	15,654	5.3%
Black	935	2,531	36.9%	960	3,220	29.8%
Asian	247	829	29.8%	172	976	17.6%
Hispanic	36	238	15.1%	86	382	22.5%
Other	15	52	28.8%	112	561	20.0%

Source: U.S. Census

Figure 14: Percent of Champaign County Families with Children Living Below Poverty

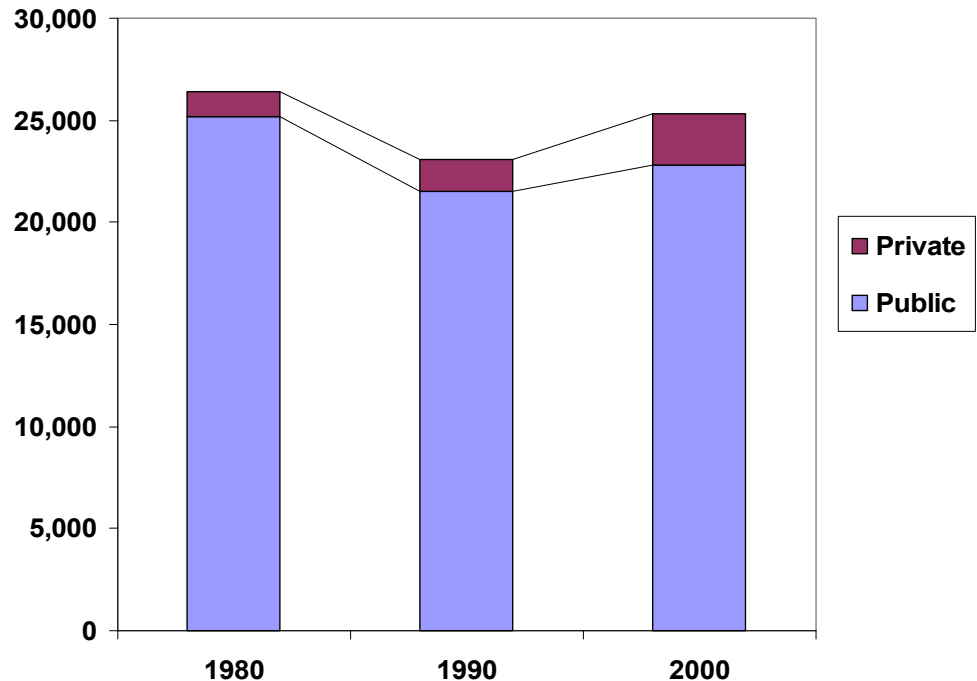


Private School Enrollment Share Increases

Private school enrollment in Champaign County is increasing for elementary and high school age students and is approaching the national average. For the state as a whole, the number of students in private schools is decreasing.

The number of preprimary students enrolled in private school is decreasing in Champaign County, the state of Illinois, and the U.S. as a whole. The rate of decrease is slower in Champaign County than that of Illinois and the nation.

Figure 16: Champaign County Elementary and High School Enrollment



Public & Private School Enrollment

	1980		1990		2000	
	Number	Percent	Number	Percent	Number	Percent
Enrolled in preprimary school:						
Public	885	48.2%	2,138	66.1%	3,599	66.8%
Private	953	51.8%	1,095	33.9%	1,790	33.2%
Enrolled in elementary or high school:						
Public	25,200	95.3%	21,523	93.4%	22,772	89.9%
Private	1,236	4.7%	1,520	6.6%	2,559	10.1%
Enrolled in college:						
Public	38,629	99.1%	39,784	96.6%	41,695	97.6%
Private	357	0.9%	1,386	3.4%	1,018	2.4%

Source: U.S. Census

Housing Affordability

Rental Housing Affordability Improved

Housing affordability increased in Champaign County from 1989 to 1999. Eighty-eight percent of all families pay less than 33 percent of their income towards rent. Median gross rent in Champaign County is \$540 per month. On average, for a family to spend 33 percent or less of their income on rent, they need a yearly income of \$19,440.

	1989	1999
Median Gross Rent	\$411	\$540

Annual Income needed for Median

< 50%	\$9,864	\$12,960
< 33%	\$14,796	\$19,440

Source: U.S. Census

Average Percent of Income Champaign County Families Pay Towards Rent (Based on Median Gross Rent)

	1989		1999	
	Number	Percent	Number	Percent
Total	38,957		39,751	
> 50%	2,947	7.6%	2,590	6.5%
33% to 50%	2,789	7.2%	2,170	5.5%
< 33%	33,221	85.3%	34,991	88.0%

Source: U.S. Census

Figure 17: Average Percent of Income Champaign County Families Pay Towards Rent (Based on Median Gross Rent)

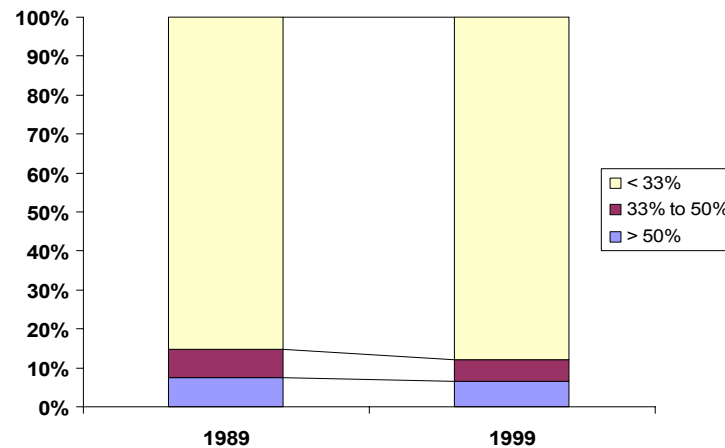
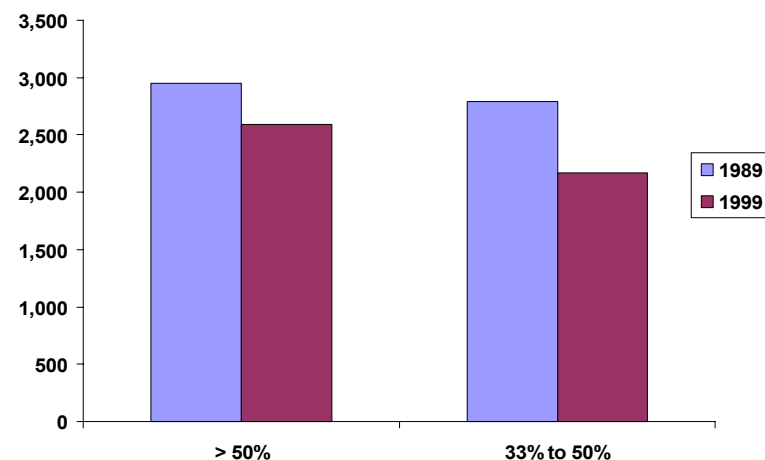


Figure 18: Average Number of Families Whose Rent is Greater than 1/3 of Income (Based on Gross Median Rent)



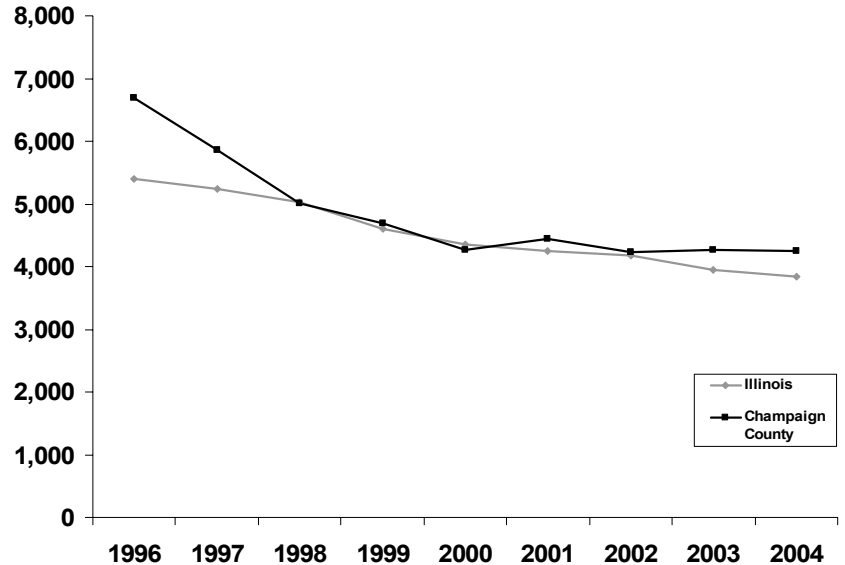
Crime Rate Decline Levels Off at Rate Higher than State

Crime rates in Champaign County are higher overall than those of the state as a whole. The crime in Champaign County has held relatively steady for five years after a significant decrease in the 1990's. The relative experience with crime varies with type of crime. For example, murder rates declined dramatically in the County and even more modestly for the state.

The Champaign County statistics include the Champaign County Sheriff's Office and the Police Departments of Champaign, Fisher, Gifford, Homer, Ludlow, Mahomet, Ogden, Rantoul, Thomasboro, Tolono, Urbana, Parkland College, and the University of Illinois.

The crime offense rates per 100,000 persons are calculated by taking the total number of offenses divided by the population total for that year, then multiplying this number by 100,000.

Figure 19: Total Crime Index



Crime Offense Rates per 100,000 Persons

	Murder	Criminal Sexual Assault	Robbery	Aggravated Assault/Battery	Burglary	Theft	Motor Vehicle Theft	Arson	Total Crime Index	Population Totals
Illinois										
1996	9.8	56.6	296.1	555.5	891.0	3,069	485.4	32.4	5,395	11,923,092
1997	9.2	55.1	277.9	535.6	867.3	3,002	468.4	30.5	5,246	11,950,266
1998	8.4	51.2	249.6	517.9	808.4	2,910	450.3	28.0	5,024	12,109,897
1999	7.7	51.5	216.4	427.0	707.5	2,699	468.1	26.6	4,606	12,200,320
2000	7.2	45.8	206.7	409.2	659.1	2,590	408.1	23.7	4,350	12,419,293
2001	7.9	46.0	201.0	398.2	637.4	2,527	395.9	24.0	4,239	12,419,314
2002	7.6	48.6	203.8	384.8	653.2	2,488	364.4	24.0	4,174	12,419,314
2003	7.1	46.5	189.2	330.6	622.5	2,403	334.2	22.6	3,955	12,586,447
2004	6.1	45.9	178.3	330.4	600.2	2,329	322.3	19.4	3,832	12,653,544
Champaign County										
1996	6.6	69.9	194.2	702.5	1,419	3,978	284.4	29.3	6,684	167,392
1997	5.4	69.9	144.0	713.3	1,180	3,504	212.7	23.9	5,853	167,392
1998	4.2	59.0	118.6	669.3	1,006	2,909	206.2	34.0	5,006	167,788
1999	4.1	67.0	99.8	604.3	889	2,821	170.9	25.8	4,682	170,272
2000	3.9	59.0	86.8	561.6	809	2,559	179.8	13.9	4,273	179,669
2001	2.8	57.9	93.5	621.1	926	2,575	148.1	20.0	4,445	179,669
2002	2.8	69.6	114.1	548.5	1,015	2,323	131.4	21.7	4,226	179,669
2003	2.7	72.2	94.9	543.0	1,007	2,349	172.0	23.3	4,265	184,337
2004	1.6	81.4	95.8	607.6	880	2,431	123.7	20.3	4,241	186,800

Source: Crime in Illinois, Illinois State Police Department

Property Tax

Property Tax Burden Increases Slightly

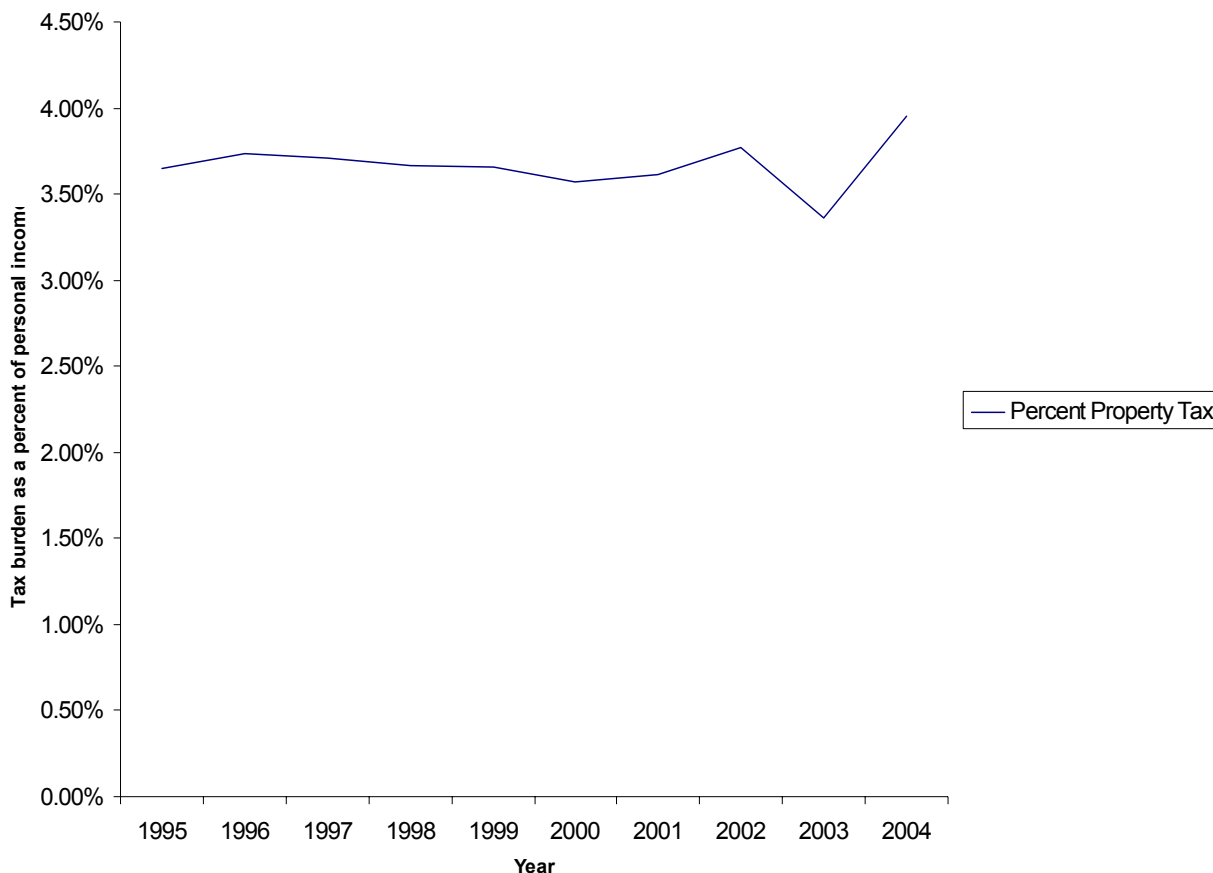
Relative to personal income growth, the burden of property taxes on Champaign County property owners has grown only slightly, despite the passage of several significant local millages. From 1995-2004 the property tax burden as a percentage of personal income grew from 3.65 percent to 3.95 percent, varying in a range of about one-half of a percent over the 10 year period. This small increase is partially due to the passage of the Public Health Department special assessment, the Nursing Home assessment, and the Tolono C U School District 7 millage.

Champaign County Property Tax Extensions

Year	Property Tax	Total Personal Income	Percent Property Tax
1995	125,663,937.21	3,447,487,000	3.65%
1996	136,281,845.17	3,646,614,000	3.74%
1997	143,189,997.87	3,857,407,000	3.71%
1998	149,100,237.71	4,068,072,000	3.67%
1999	155,303,921.91	4,251,026,000	3.65%
2000	163,664,296.53	4,579,475,000	3.57%
2001	172,755,358.93	4,777,816,000	3.62%
2002	184,108,059.47	4,879,738,000	3.77%
2003	195,012,841.60	5,807,031,000	3.36%
2004	207,276,533.08	5,249,339,000	3.95%

Source: Illinois Department of Revenue, Bureau of Economic Analysis

Figure 20: Property tax as a percent of total personal income, Champaign County, IL 1995-2004



Sales Tax Yield Decreases Slightly

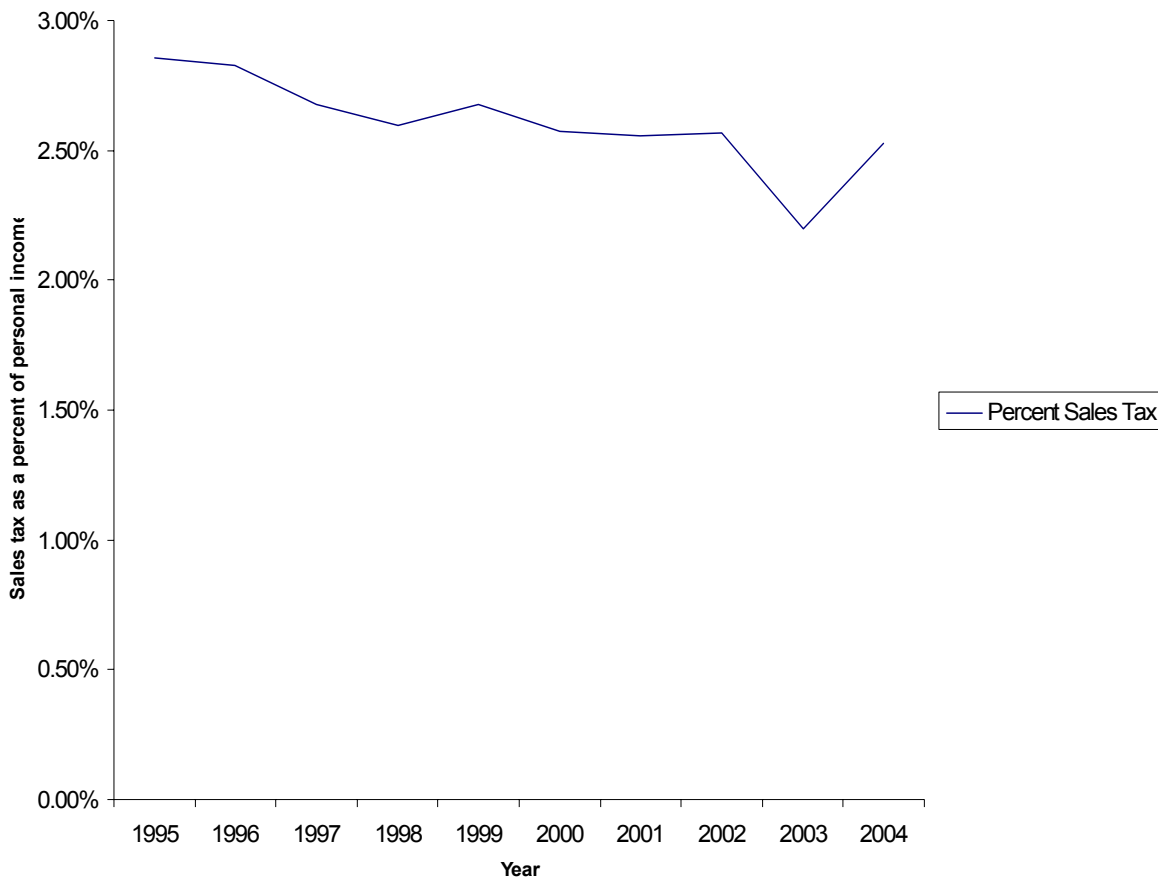
Sales tax yield for Champaign County governments has fallen relative to personal income from 2.86 percent to 2.53 percent from 1995 to 2004. The 0.35 percent drop in sales tax yield is \$17 million lower than if the yield stayed at the 1995 rates.

Champaign County Sales Tax Receipts

Year	Sales Tax	Total Personal Income	Percent Sales Tax
1995	98,430,969.12	3,447,487,000	2.86%
1996	103,065,532.15	3,646,614,000	2.83%
1997	103,267,898.40	3,857,407,000	2.68%
1998	105,594,119.10	4,068,072,000	2.60%
1999	113,867,238.61	4,251,026,000	2.68%
2000	117,766,084.30	4,579,475,000	2.57%
2001	122,053,881.30	4,777,816,000	2.55%
2002	125,185,913.30	4,879,738,000	2.57%
2003	127,633,120.60	5,807,031,000	2.20%
2004	132,761,656.29	5,249,339,000	2.53%

Source: Illinois Department of Revenue , Bureau of Economic Analysis

Figure 21: Sales tax as a percent of personal income, Champaign County, IL 1995-2004



Parks & Preserves

Park Acreages Nearly Double

The number of parks in Champaign, Urbana, and surrounding communities increased significantly over the past 35 years. The Champaign Park District now has 544 acres, over a 60 percent increase. The Urbana Park District currently manages 544 acres, more than double the 216 acres from 1970. Village and Township parks also grew, particularly in Mahomet and Savoy who have 80 and 17 acres respectively.

Champaign County Park Acreage Per Capita

	1970	2005
Population	163,281	184,905
Acres Per 1,000 Persons	16.2	30.9

Source: Greenways & Trails Plan, Champaign Park District, Village of St. Joseph, U.S. Census

Total County and Local Park Acreage in Illinois

	1976	2003
Acres	182,596	279,229
Acres per 1,000 Persons	16.1	22.5

Source: Outdoor Recreation in Illinois: Statewide Comprehensive Outdoor Recreation Plan 1978 and 2003.

Urban Population and Park Acreage (without forest preserves)

	1970	2005
Population	132,217	150,712
Acres Per Capita Per 1,000 Persons	10.7	13.9

Source: Greenways & Trails Plan, Champaign Park District, U.S. Census

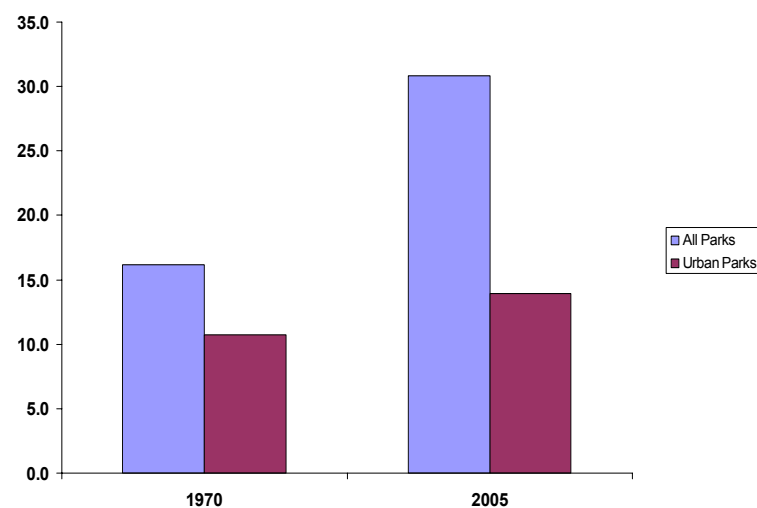
Select Communities Park Acreage per 1,000 Persons (2005)

Champaign	7.7
Urbana	14.4
Mahomet	14.0
Rantoul	15.9
Savoy	3.5

Source: Greenways & Trails Plan, Champaign Park District, U.S. Census

Champaign County park acreages increased from 2,644 in 1970 to 5,465 in 2005. The graph shows the per capita acreages with and without the forest preserves. The forest preserves provide recreational opportunities for county residents. However, they are not within short walking or driving distance for the majority of county residents and provide recreational opportunities that differ from the local parks and park districts.

Figure 22: Per Capita Park Acreage



Champaign County Parks

Total Acreage by Agency	1970	Current
Champaign County Forest Preserve	1,226	3,611
Champaign Park District	338	552
Urbana Park District	216	544
Rantoul Park District/Rantoul Recreation	203	198
University of Illinois Arboretum & Illini Grove	169	169
Student Facilities	125	
Golf Courses	354	241
Other Parks	13	295
Village of Savoy	*	17
Village of Mahomet	*	80
Total	2,644	5,706

*included in Other Parks

Sources: 2004 Greenways and Trails Plan, 1972 Open Space Element, Champaign Park District, Village of St. Joseph, 2005 parcel data

High, but Declining Percentage Walk to Work

Over 10 percent of Champaign County workers walk and bike to work, a rate that is more than three times the national average. Nationally, 2.9 percent of workers walked to work and 0.4 percent of workers rode a bike.

Champaign County is also lower than average in the percentage of people who drive to work. Nearly 88 percent of U.S. workers drive to work. In Champaign County, this number is over seven percent lower at 80.5 percent. Since 1990, the percentage of people that drove alone increased, while those that biked and walked decreased 25 percent.

Travel Mode

Travel Mode	1990		2000	
	U.S.	Champaign County	U.S.	Champaign County
Car, truck, or van:	86.5%	78.1%	87.9%	80.5%
Drove alone	73.2%	66.4%	75.7%	69.4%
Carpooled	13.4%	11.7%	12.2%	11.0%
Public transportation	5.3%	4.6%	4.7%	4.9%
Motorcycle	0.2%	0.4%	0.1%	0.2%
Bicycle	0.4%	1.8%	0.4%	1.8%
Walked	3.9%	11.4%	2.9%	8.5%
Other means	0.7%	0.3%	0.7%	0.5%
Worked at home	3.0%	3.4%	3.3%	3.7%

Source: U.S. Census

Figure 23: Travel Mode—2000

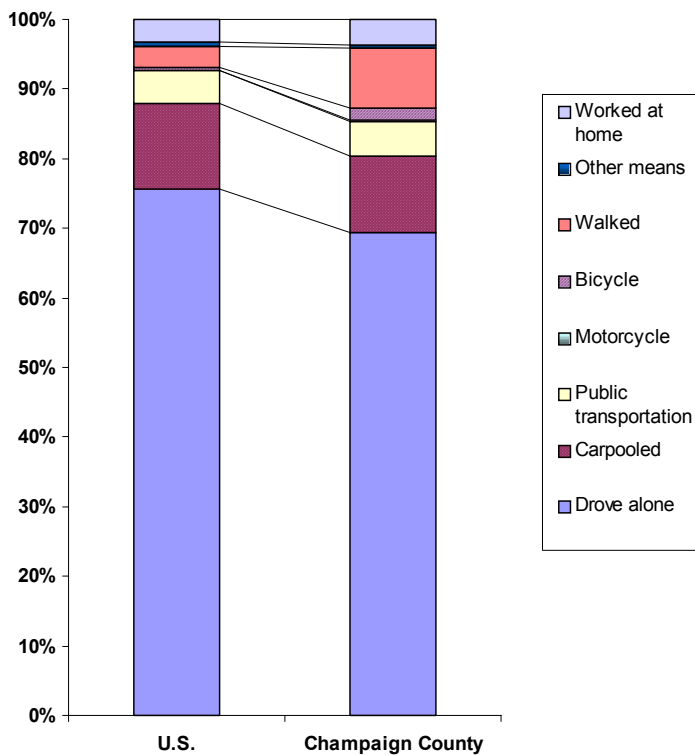
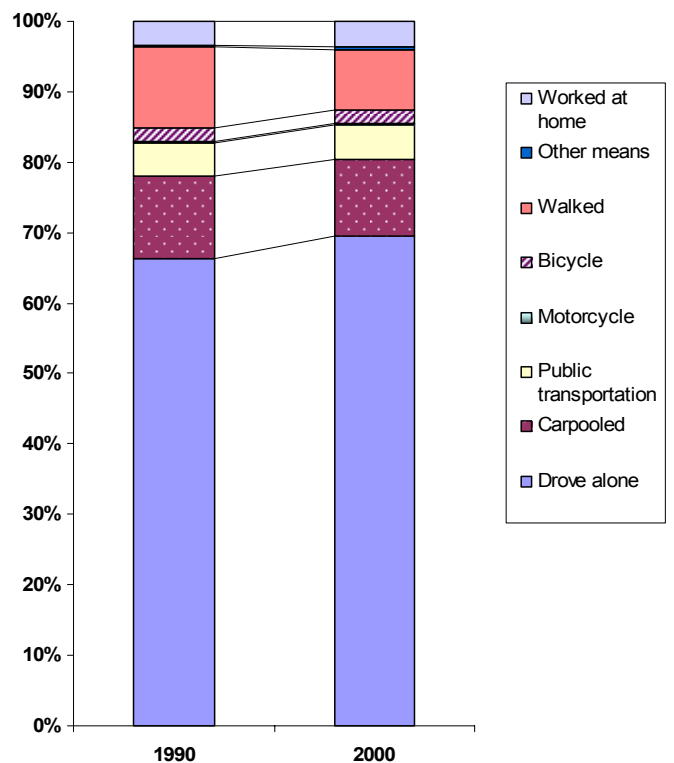


Figure 24: Champaign County Travel Mode



Transportation

Per Capita Enplanements Stabilize

The total number of per capita enplanements in the C-U area is decreasing. Total enplanements are determined using the population from each community and their total number of enplanements in a given year.

Enplanements per capita for C-U in 2004 is roughly two-thirds of what it was in 1990, but is essentially unchanged since 1995. The number of enplanements for the Bloomington area have nearly tripled, and those for Springfield and Peoria have remained relatively constant. Indianapolis has a much higher per capita enplanement rate than the regional airports.

Enplanements per Capita

	1990	1995	2000	2004
Indianapolis		2.24	2.41	2.37
Bloomington	0.50	0.53	1.57	1.42
C-U	1.04	0.67	0.71	0.67
Peoria	0.66	0.52	0.57	0.66
Springfield	0.64	0.53	0.36	0.55

Sources: Illinois Department of Transportation, IDOT Airport Inventory Report 2002, Indianapolis Airport Annual Report 2004, & U.S. Census Population Estimates, 2000 MSA definitions used

Figure 25: Enplanements per Capita

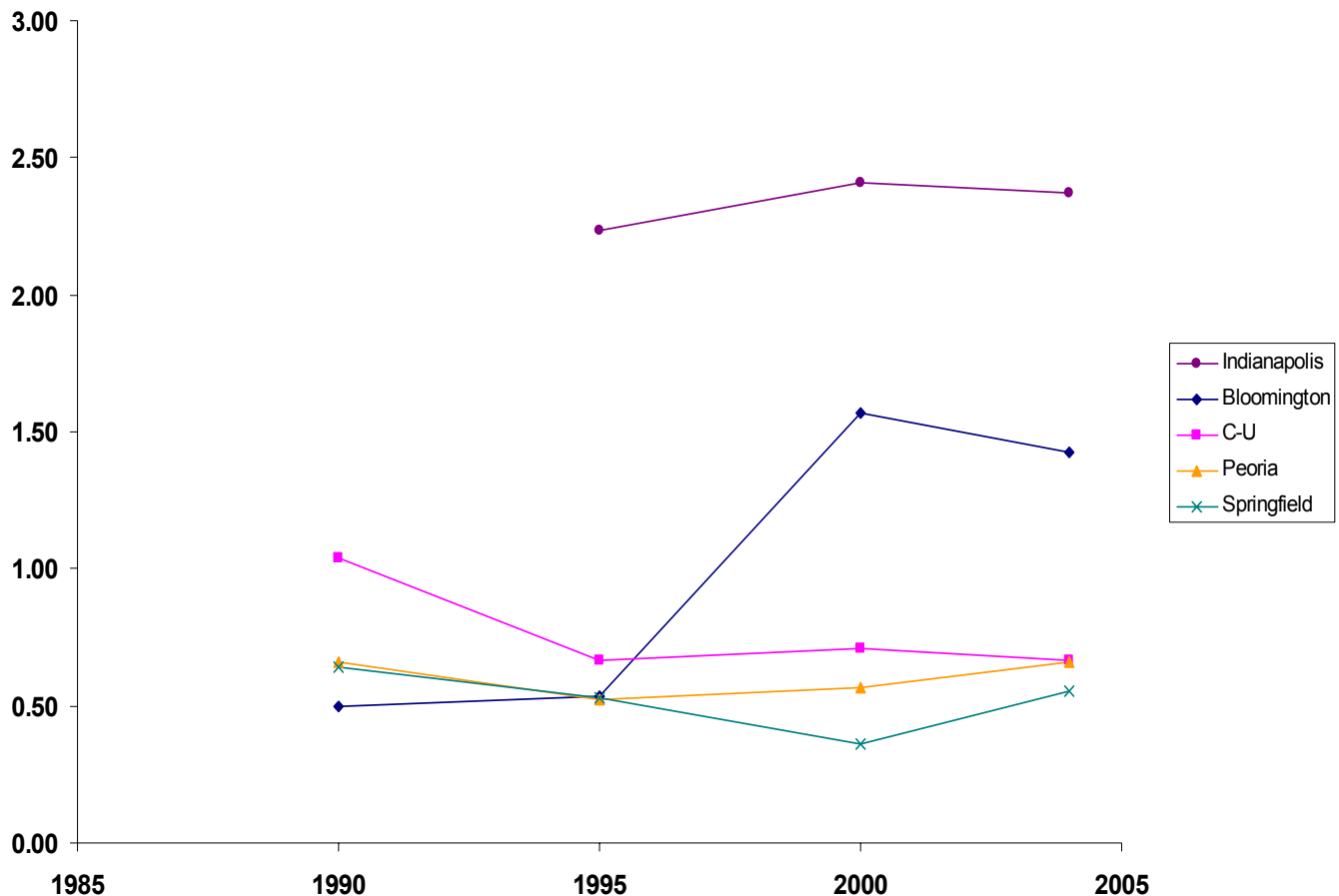
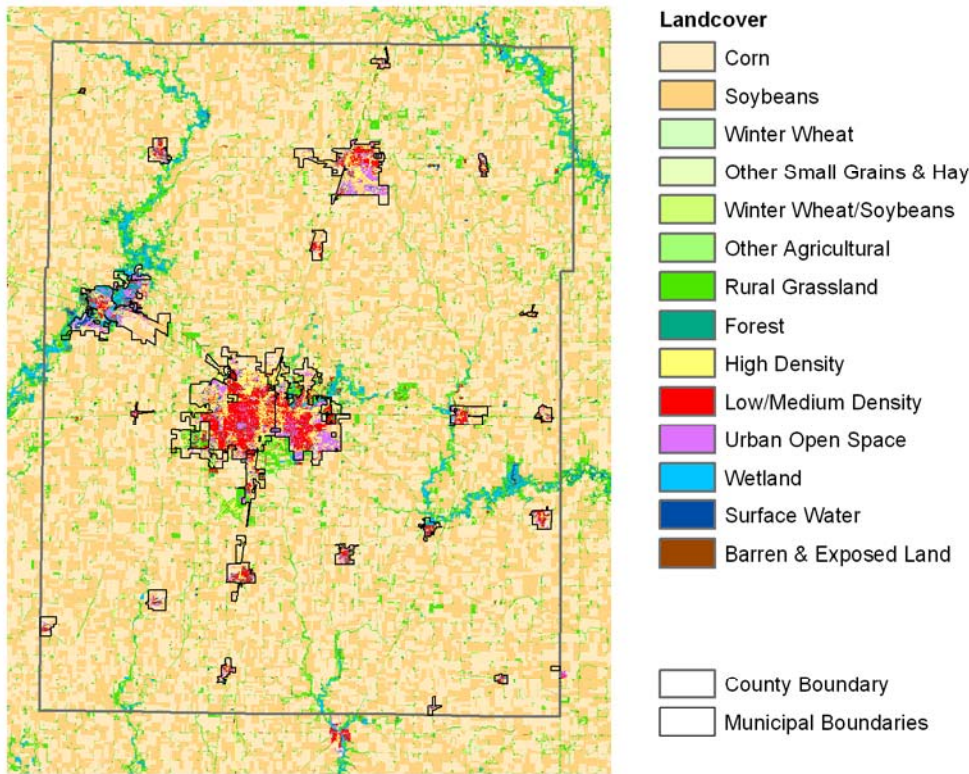


Figure 26: Champaign County 2000 Land Cover

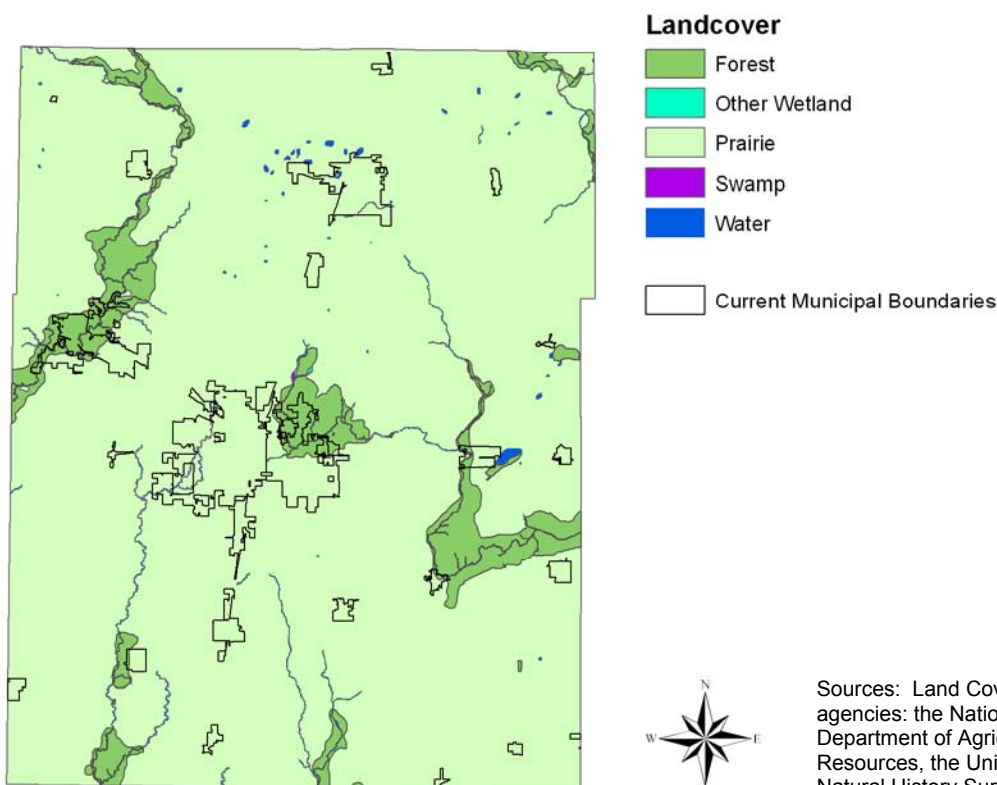


Current land cover in Champaign County is 91.5 percent agricultural land, 6 percent urban and built-up land, 1.2 percent wetland and 1 percent forest. The remainder is surface water and other types at less than .1 percent each.

The land cover in the early 1800s was composed of 92.5 percent prairie, 7 percent forest, and .5 percent water.

The amount of agricultural land in 2000 is nearly equal to the amount of land that was prairie in the early 1800s. The percent of forested land in the 1800s is slightly higher than the percent of urban and built-up land in 2000.

Figure 27: Champaign County Land Cover in the Early 1800s



Sources: Land Cover Imagery provided by the following agencies: the National Agricultural Statistics Service, the Illinois Department of Agriculture, the Illinois Department of Natural Resources, the United States Geological Survey, the Illinois Natural History Survey, and the Illinois State Geological Survey.

